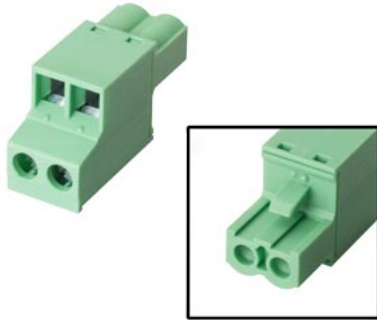


plug, female, 2-pole, type 1, grid size 5.08 mm, scope of supply: 10 plugs



General information	
Product type designation	Connector, female, 2-pin, type 1
Control elements	
Frame size/design	
<ul style="list-style-type: none"> Standard 	Yes; Z shape
Installation type/mounting	
Wall mounting/direct mounting	Yes; can be plugged into SIMATIC HMI device
Supply voltage	
Rated value (DC)	24 V
Interfaces	
HMI-side interface	
<ul style="list-style-type: none"> Number of pins HMI-side 	2; Male
Device-side interface	
<ul style="list-style-type: none"> Number of pins device-side 	2; Female, screw terminals
Standards, approvals, certificates	
RoHS conformity	Yes
China RoHS compliance	Yes
Use in hazardous areas	
<ul style="list-style-type: none"> ATEX Zone 2 ATEX Zone 22 IECEx Zone 2 IECEx Zone 22 cULus Class I Zone 1 cULus Class I Zone 2, Division 2 FM Class I Division 2 	Yes; Device-dependent, see operating instructions Yes; Device-dependent, see operating instructions Yes; Device-dependent, see operating instructions Yes; Device-dependent, see operating instructions Yes; Device-dependent, see operating instructions Yes; Device-dependent, see operating instructions Yes; Device-dependent, see operating instructions
Ambient conditions	
Ambient temperature during operation	
<ul style="list-style-type: none"> min. max. 	0 °C 55 °C
Ambient temperature during storage/transportation	
<ul style="list-style-type: none"> min. max. 	-20 °C 70 °C
Relative humidity	
<ul style="list-style-type: none"> Operation, max. 	95 %
Mechanics/material	
Material	
<ul style="list-style-type: none"> Plastic 	Yes; green
Enclosure material (front)	
<ul style="list-style-type: none"> Plastic 	Yes; Contact spacing 5.08 mm
Screw type	

• 4.5 V

Yes; Screw terminals

Dimensions

Width	10 mm
Height	15 mm
Thickness	27 mm

Scope of supply

Delivery quantity in pieces	10
-----------------------------	----

Other

Merchandise	No
Manufacturer name	SIEMENS AG
Manufacturer's address	Gleiwitzerstraße 555, 90475 Nuremberg, Germany
Target devices	for Comfort Panel, IPC, Flat Panel, Thin Client

Classifications

	Version	Classification
eClass	14	27-33-02-92
eClass	12	27-33-02-92
eClass	9.1	27-33-02-92
eClass	9	27-33-02-92
eClass	8	27-24-92-03
eClass	7.1	27-24-92-03
eClass	6	27-24-92-03
ETIM	10	EC002584
ETIM	9	EC002584
ETIM	8	EC002584
ETIM	7	EC002584
IDEA	4	3552
UNSPSC	15	32-15-17-03

Approvals / Certificates

General Product Approval	EMV
--------------------------	-----



EG-Konf.



RCM

KC



RCM



RCM

Further information

Usable in the following products: Detailed information can be found in the cross-list, which is available for download in the following SIOS note: 40466415

<https://support.industry.siemens.com/cs/document/40466415/status-of-the-simatic-hmi-accessories-and-cross-list-update?dti=0&lc=en-VW>

last modified:

5/22/2024