








Inscription plate for illuminated pushbutton, round, milky with black font, with graphic symbol: on/off momentary contact

product brand name	SIRIUS ACT	
product designation	Insert label	
product type designation	3SU1	
General technical data		
shock resistance for railway applications according to EN 61373	Category 1, Class B	
vibration resistance for railway applications according to EN 61373	Category 1, Class B	
Substance Prohibance (Date)	10/01/2014	
Weight	1 g	
Ambient conditions		
ambient temperature		
• during operation	70 ... -25 °C	
• during storage and transport	80 ... -40 °C	
Environmental footprint		
Environmental Product Declaration (EPD)	Yes	
global warming potential [CO2 eq] total	0.787 kg	
global warming potential [CO2 eq] during manufacturing	0.566 kg	
global warming potential [CO2 eq] during operation	0.235 kg	
global warming potential [CO2 eq] after end of life	-0.015 kg	
Accessories		
material of accessory	Plastic	
fastening method of label	insert	
marking of inscription plate	SYMBOL: ON-OFF MOMENTARY CONTACT	
shape of inscription plate	Round	
color of inscription plate	milky (plate); black (text)	
printed ISO symbols	SYMBOL: ON-OFF MOMENTARY CONTACT TYPE	
Approvals Certificates		
General Product Approval	Test Certificates	Maritime application
    	Type Test Certificates/Test Report	
Maritime application	other	Environment



[Confirmation](#)



Environment

Siemens
EcoTech



[Environmental Con-
firmations](#)

Further information

Information on the packaging

<https://support.industry.siemens.com/cs/ww/en/view/109813875>

Information for data generation and storage

<https://support.industry.siemens.com/cs/ww/en/view/109995012>

Information- and Downloadcenter (Catalogs, Brochures,...)

<https://www.siemens.com/ic10>

Industry Mall (Online ordering system)

<https://mall.industry.siemens.com/mall/en/en/Catalog/product?mlfb=3SU1900-0AB71-0RN0>

Cax online generator

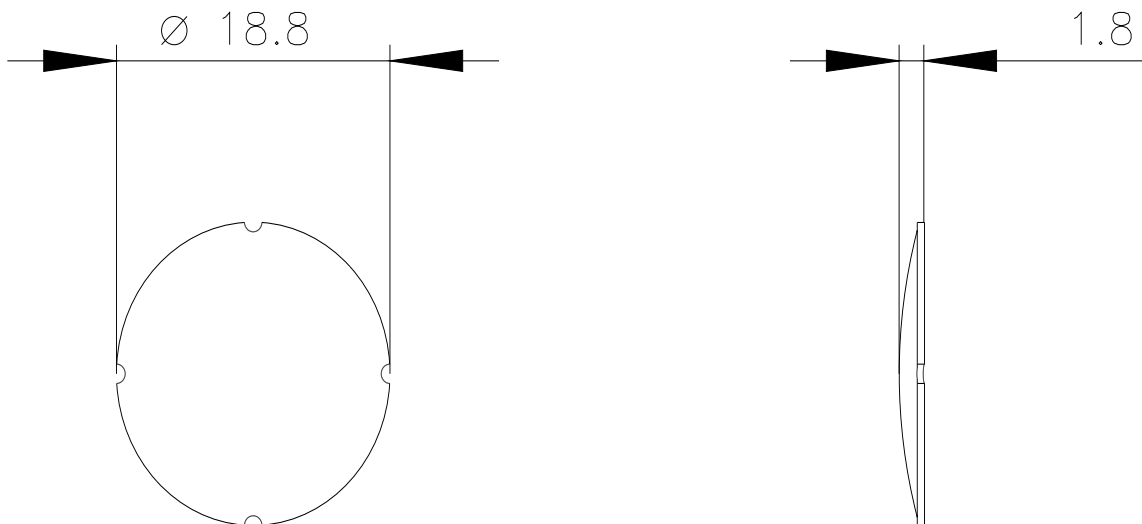
<https://support.automation.siemens.com/WW/CAXorder/default.aspx?lang=en&mlfb=3SU1900-0AB71-0RN0>

Service&Support (Manuals, Certificates, Characteristics, FAQs,...)

<https://support.industry.siemens.com/cs/ww/en/ps/3SU1900-0AB71-0RN0>

Image database (product images, 2D dimension drawings, 3D models, device circuit diagrams, EPLAN macros, ...)

https://www.automation.siemens.com/bilddb/cax_de.aspx?mlfb=3SU1900-0AB71-0RN0&lang=en



last modified:

4/2/2025