

Inscription plate for illuminated pushbutton, round, milky with black font, with graphic symbol: lock

| | |
|--------------------------|--------------|
| product brand name | SIRIUS ACT |
| product designation | Insert label |
| product type designation | 3SU1 |

General technical data

| | |
|---|---------------------|
| shock resistance for railway applications according to EN 61373 | Category 1, Class B |
| vibration resistance for railway applications according to EN 61373 | Category 1, Class B |
| Substance Prohibance (Date) | 10/01/2014 |
| Weight | 3 g |

Ambient conditions

| | |
|--------------------------------|---------------|
| ambient temperature | |
| • during operation | 70 ... -25 °C |
| • during storage and transport | 80 ... -40 °C |

Environmental footprint

| | |
|--|-----------|
| Environmental Product Declaration (EPD) | Yes |
| global warming potential [CO2 eq] total | 0.787 kg |
| global warming potential [CO2 eq] during manufacturing | 0.566 kg |
| global warming potential [CO2 eq] during operation | 0.235 kg |
| global warming potential [CO2 eq] after end of life | -0.015 kg |

Accessories

| | |
|------------------------------|-----------------------------|
| material of accessory | Plastic |
| fastening method of label | insert |
| marking of inscription plate | SYMBOL: LOCK |
| shape of inscription plate | Round |
| color of inscription plate | milky (plate); black (text) |
| printed ISO symbols | SYMBOL: LOCK |

Approvals Certificates

| | | |
|--------------------------|-------------------|----------------------|
| General Product Approval | Test Certificates | Maritime application |
|--------------------------|-------------------|----------------------|



[Type Test Certificates/Test Report](#)



| | | |
|----------------------|-------|-------------|
| Maritime application | other | Environment |
|----------------------|-------|-------------|



[Confirmation](#)



Environment

Siemens
EcoTech



[Environmental Con-
firmations](#)

Further information

Information on the packaging

<https://support.industry.siemens.com/cs/ww/en/view/109813875>

Information for data generation and storage

<https://support.industry.siemens.com/cs/ww/en/view/109995012>

Information- and Downloadcenter (Catalogs, Brochures,...)

<https://www.siemens.com/ic10>

Industry Mall (Online ordering system)

<https://mall.industry.siemens.com/mall/en/en/Catalog/product?mlfb=3SU1900-0AB71-0RK0>

Cax online generator

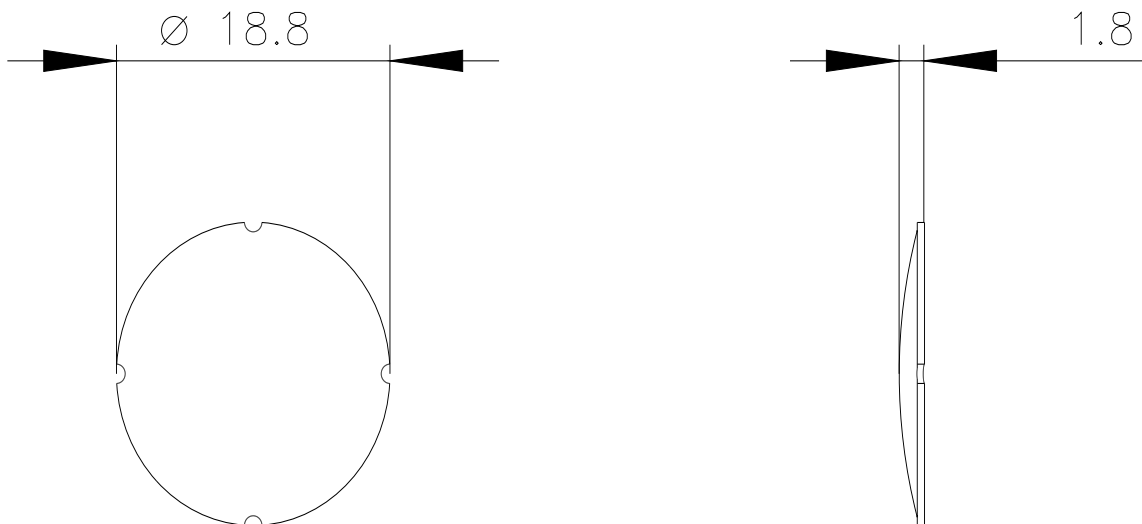
<https://support.automation.siemens.com/WW/CAXorder/default.aspx?lang=en&mlfb=3SU1900-0AB71-0RK0>

Service&Support (Manuals, Certificates, Characteristics, FAQs,...)

<https://support.industry.siemens.com/cs/ww/en/ps/3SU1900-0AB71-0RK0>

Image database (product images, 2D dimension drawings, 3D models, device circuit diagrams, EPLAN macros, ...)

https://www.automation.siemens.com/bilddb/cax_de.aspx?mlfb=3SU1900-0AB71-0RK0&lang=en



last modified:

4/2/2025