



Basic switch for position switch 3SE513 Enclosure plastic according to EN 50041, 1 x (M20 x 1.5) 2 NO/1 NC slow-action contacts without actuator head

|                                                                          |                                                          |
|--------------------------------------------------------------------------|----------------------------------------------------------|
| <b>product brand name</b>                                                | SIRIUS                                                   |
| <b>product designation</b>                                               | Mechanical safety switches                               |
| <b>product type designation</b>                                          | 3SE5                                                     |
| <b>manufacturer's article number</b>                                     |                                                          |
| • of the supplied switching contacts                                     | <a href="#">3SE5000-0PA00</a>                            |
| • of the supplied empty enclosure with cover                             | <a href="#">3SE5132-0AA00</a>                            |
| <b>suitability for use safety switch</b>                                 | Yes                                                      |
| <b>General technical data</b>                                            |                                                          |
| <b>product function positive opening</b>                                 | Yes                                                      |
| <b>insulation voltage rated value</b>                                    | 250 V                                                    |
| <b>degree of pollution</b>                                               | class 3                                                  |
| <b>surge voltage resistance rated value</b>                              | 4 kV                                                     |
| <b>protection class IP</b>                                               | IP66/IP67                                                |
| <b>shock resistance</b>                                                  |                                                          |
| • according to IEC 60068-2-27                                            | 30g / 11 ms                                              |
| <b>vibration resistance according to IEC 60068-2-6</b>                   | 0.35 mm/5g                                               |
| <b>mechanical service life (operating cycles) typical</b>                | 15 000 000                                               |
| <b>electrical endurance (operating cycles) at AC-15 at 230 V typical</b> | 100 000                                                  |
| <b>thermal current</b>                                                   | 10 A                                                     |
| <b>reference code according to IEC 81346-2</b>                           | B                                                        |
| <b>continuous current of the C characteristic MCB</b>                    | 1 A; for a short-circuit current smaller than 400 A      |
| <b>continuous current of the quick DIAZED fuse link</b>                  | 10 A; for a short-circuit current smaller than 400 A     |
| <b>continuous current of the DIAZED fuse link gG</b>                     | 6 A                                                      |
| <b>active principle</b>                                                  | mechanical                                               |
| <b>repeat accuracy</b>                                                   | 0.05 mm                                                  |
| <b>Substance Prohibitance (Date)</b>                                     | 07/01/2006                                               |
| <b>SVHC substance name</b>                                               | Imidazolidine-2-thione (2-imidazoline-2-thiol) - 96-45-7 |
| <b>Weight</b>                                                            | 0.08 kg                                                  |
| <b>minimum actuating force in directions of actuation</b>                | 20 N                                                     |
| <b>length of the sensor</b>                                              | 85.7 mm                                                  |
| <b>width of the sensor</b>                                               | 40 mm                                                    |
| <b>Ambient conditions</b>                                                |                                                          |
| <b>ambient temperature</b>                                               |                                                          |
| • during operation                                                       | -25 ... +85 °C                                           |
| • during storage                                                         | -40 ... +90 °C                                           |
| <b>explosion protection category for dust</b>                            | none                                                     |
| <b>Main circuit</b>                                                      |                                                          |
| <b>design of the switching contact</b>                                   | mechanical                                               |
| <b>operating frequency rated value</b>                                   | 50 ... 60 Hz                                             |

|                                              |        |
|----------------------------------------------|--------|
| number of NC contacts for auxiliary contacts | 1      |
| number of NO contacts for auxiliary contacts | 2      |
| <b>operational current at AC-15</b>          |        |
| • at 24 V rated value                        | 6 A    |
| • at 125 V rated value                       | 6 A    |
| • at 240 V rated value                       | 6 A    |
| • at 400 V rated value                       | 4 A    |
| <b>operational current at DC-13</b>          |        |
| • at 24 V rated value                        | 3 A    |
| • at 125 V rated value                       | 0.55 A |
| • at 250 V rated value                       | 0.27 A |
| • at 400 V rated value                       | 0.12 A |

|                                             |               |
|---------------------------------------------|---------------|
| <b>Enclosure</b>                            |               |
| design of the housing                       | block, narrow |
| material of the enclosure                   | plastic       |
| coating of the enclosure                    | Other types   |
| design of the housing according to standard | Yes           |

|                                             |                                                                  |
|---------------------------------------------|------------------------------------------------------------------|
| <b>Drive Head</b>                           |                                                                  |
| design of the actuating element             | Other, without, basic switch                                     |
| design of the switching function            | Positive opening with appropriate positive opening actuator head |
| circuit principle                           | slow-action contacts                                             |
| number of switching contacts safety-related | 1                                                                |
| cable entry type                            | 1x (M20 x 1.5)                                                   |

|                                           |              |
|-------------------------------------------|--------------|
| <b>Installation/ mounting/ dimensions</b> |              |
| mounting position                         | any          |
| fastening method                          | screw fixing |

|                                                          |                                                                       |
|----------------------------------------------------------|-----------------------------------------------------------------------|
| <b>Connections/ Terminals</b>                            |                                                                       |
| type of electrical connection                            | screw terminal                                                        |
| type of connectable conductor cross-sections             |                                                                       |
| • solid                                                  | 1x (0.5 ... 1.5 mm <sup>2</sup> ), 2x (0.5 ... 0.75 mm <sup>2</sup> ) |
| • finely stranded with core end processing               | 1x (0.5 ... 1.5 mm <sup>2</sup> ), 2x (0.5 ... 0.75 mm <sup>2</sup> ) |
| • for AWG cables solid                                   | 1x (20 ... 16), 2x (20 ... 18)                                        |
| • for AWG cables stranded                                | 1x (20 ... 16), 2x (20 ... 18)                                        |
| design of the interface for safety-related communication | without                                                               |

|                                |         |
|--------------------------------|---------|
| <b>Communication/ Protocol</b> |         |
| design of the interface        | without |

|                               |       |
|-------------------------------|-------|
| <b>Approvals Certificates</b> |       |
| General Product Approval      | other |



|       |             |
|-------|-------------|
| other | Environment |
|-------|-------------|

[Confirmation](#)

[Environmental Confirmations](#)

#### Further information

Information on the packaging

<https://support.industry.siemens.com/cs/ww/en/view/109813875>

Information for data generation and storage

<https://support.industry.siemens.com/cs/ww/en/view/109995012>

Information- and Downloadcenter (Catalogs, Brochures,...)

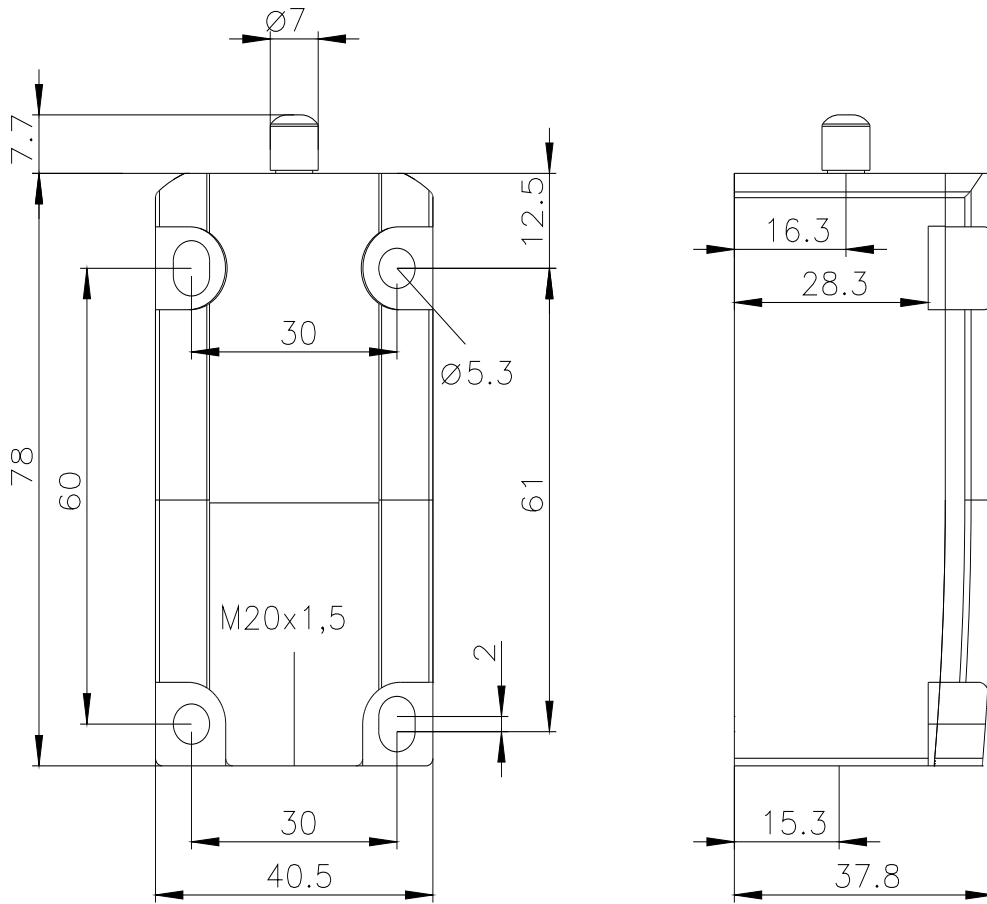
<https://www.siemens.com/ic10>

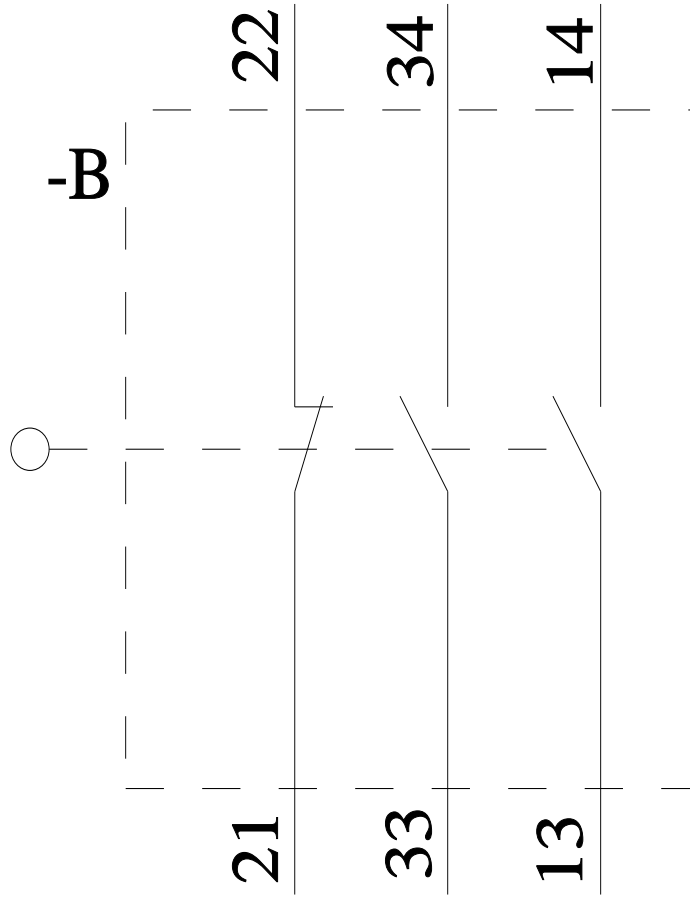
Industry Mall (Online ordering system)

<https://mall.industry.siemens.com/mall/en/en/Catalog/product?mlfb=3SE5132-0PA00>

Cax online generator

<https://support.automation.siemens.com/WW/CAXorder/default.aspx?lang=en&mlfb=3SE5132-0PA00>





last modified:

4/2/2025 