



Contact block IP20 for position switch 3SE5250 open type design 1 NO/1 NC quick action contact

|                                                                   |                                                         |
|-------------------------------------------------------------------|---------------------------------------------------------|
| product brand name                                                | SIRIUS                                                  |
| product designation                                               | contact                                                 |
| product type designation                                          | 3SE5                                                    |
| <b>General technical data</b>                                     |                                                         |
| product function positive opening                                 | Yes                                                     |
| insulation voltage rated value                                    | 400 V                                                   |
| degree of pollution                                               | class 3                                                 |
| surge voltage resistance rated value                              | 6 kV                                                    |
| protection class IP                                               | IP20, conductor connected and clamping screw screwed in |
| shock resistance                                                  |                                                         |
| • according to IEC 60068-2-27                                     | 30g / 11 ms                                             |
| vibration resistance                                              |                                                         |
| • according to IEC 60068-2-6                                      | 0.35 mm/5g                                              |
| mechanical service life (operating cycles) typical                | 15 000 000                                              |
| electrical endurance (operating cycles) at AC-15 at 230 V typical | 100 000                                                 |
| thermal current                                                   | 10 A                                                    |
| reference code according to IEC 81346-2                           | S                                                       |
| continuous current of the C characteristic MCB                    | 1 A; for a short-circuit current smaller than 400 A     |
| continuous current of the quick DIAZED fuse link                  | 10 A; for a short-circuit current smaller than 400 A    |
| continuous current of the DIAZED fuse link gG                     | 6 A                                                     |
| active principle                                                  | mechanical                                              |
| repeat accuracy                                                   | 0.1 mm                                                  |
| Substance Prohibition (Date)                                      | 07/01/2006                                              |
| Weight                                                            | 0.025 kg                                                |
| width of the sensor                                               | 25 mm                                                   |
| <b>Ambient conditions</b>                                         |                                                         |
| ambient temperature                                               |                                                         |
| • during operation                                                | -25 ... +85 °C                                          |
| • during storage                                                  | -40 ... +90 °C                                          |
| explosion protection category for dust                            | none                                                    |
| <b>Main circuit</b>                                               |                                                         |
| operating frequency rated value                                   | 50 ... 60 Hz                                            |
| number of NC contacts for auxiliary contacts                      | 1                                                       |
| number of NO contacts for auxiliary contacts                      | 1                                                       |
| operational current at AC-15                                      |                                                         |
| • at 24 V rated value                                             | 6 A                                                     |
| • at 125 V rated value                                            | 6 A                                                     |
| • at 240 V rated value                                            | 6 A                                                     |
| • at 400 V rated value                                            | 4 A                                                     |

|                                                                                                                                                                                  |                                                                                                                                                                                                                    |
|----------------------------------------------------------------------------------------------------------------------------------------------------------------------------------|--------------------------------------------------------------------------------------------------------------------------------------------------------------------------------------------------------------------|
| <b>operational current at DC-13</b>                                                                                                                                              |                                                                                                                                                                                                                    |
| <ul style="list-style-type: none"> <li>• at 24 V rated value</li> <li>• at 125 V rated value</li> <li>• at 250 V rated value</li> <li>• at 400 V rated value</li> </ul>          | 3 A<br>0.55 A<br>0.27 A<br>0.12 A                                                                                                                                                                                  |
| <b>Enclosure</b>                                                                                                                                                                 |                                                                                                                                                                                                                    |
| <b>coating of the enclosure</b>                                                                                                                                                  | Other types                                                                                                                                                                                                        |
| <b>Drive Head</b>                                                                                                                                                                |                                                                                                                                                                                                                    |
| <b>design of the switching function</b>                                                                                                                                          | positive opening                                                                                                                                                                                                   |
| <b>circuit principle</b>                                                                                                                                                         | snap-action contacts                                                                                                                                                                                               |
| number of switching contacts safety-related                                                                                                                                      | 1                                                                                                                                                                                                                  |
| <b>Installation/ mounting/ dimensions</b>                                                                                                                                        |                                                                                                                                                                                                                    |
| <b>mounting position</b>                                                                                                                                                         | any                                                                                                                                                                                                                |
| <b>fastening method</b>                                                                                                                                                          | snap-on mounting                                                                                                                                                                                                   |
| <b>Connections/ Terminals</b>                                                                                                                                                    |                                                                                                                                                                                                                    |
| <b>type of electrical connection</b>                                                                                                                                             | screw terminal                                                                                                                                                                                                     |
| <b>type of connectable conductor cross-sections</b>                                                                                                                              |                                                                                                                                                                                                                    |
| <ul style="list-style-type: none"> <li>• solid</li> <li>• finely stranded with core end processing</li> <li>• for AWG cables solid</li> <li>• for AWG cables stranded</li> </ul> | 1x (0.5 ... 1.5 mm <sup>2</sup> ), 2x (0.5 ... 0.75 mm <sup>2</sup> )<br>1x (0.5 ... 1.5 mm <sup>2</sup> ), 2x (0.5 ... 0.75 mm <sup>2</sup> )<br>1x (20 ... 16), 2x (20 ... 18)<br>1x (20 ... 16), 2x (20 ... 18) |
| design of the interface for safety-related communication                                                                                                                         | without                                                                                                                                                                                                            |
| <b>Communication/ Protocol</b>                                                                                                                                                   |                                                                                                                                                                                                                    |
| <b>design of the interface</b>                                                                                                                                                   | without                                                                                                                                                                                                            |
| <b>Approvals Certificates</b>                                                                                                                                                    |                                                                                                                                                                                                                    |
| General Product Approval                                                                                                                                                         |                                                                                                                                                                                                                    |



[KC](#)

|                          |                   |       |             |
|--------------------------|-------------------|-------|-------------|
| General Product Approval | Functional Safety | other | Environment |
|--------------------------|-------------------|-------|-------------|



[Type Examination Certificate](#)



[Confirmation](#)

[Environmental Confirmations](#)

#### Further information

##### Information on the packaging

<https://support.industry.siemens.com/cs/ww/en/view/109813875>

##### Information for data generation and storage

<https://support.industry.siemens.com/cs/ww/en/view/109995012>

##### Information- and Downloadcenter (Catalogs, Brochures,...)

<https://www.siemens.com/ic10>

##### Industry Mall (Online ordering system)

<https://mall.industry.siemens.com/mall/en/en/Catalog/product?mlfb=3SE5050-0CA00>

##### Cax online generator

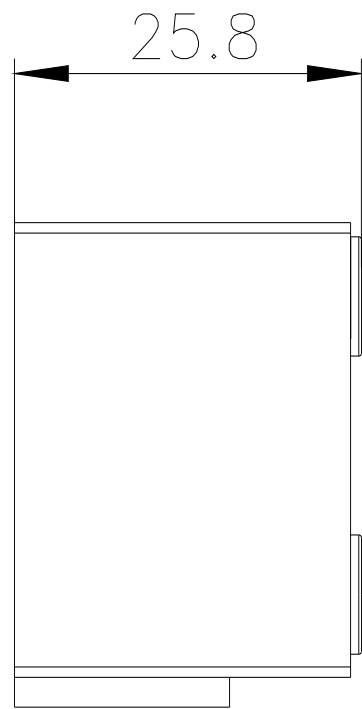
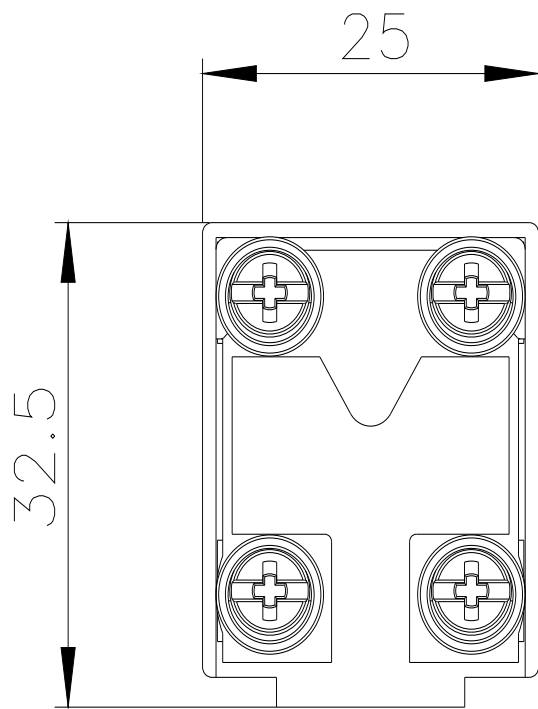
<https://support.automation.siemens.com/WW/CAXorder/default.aspx?lang=en&mlfb=3SE5050-0CA00>

##### Service&Support (Manuals, Certificates, Characteristics, FAQs,...)

<https://support.industry.siemens.com/cs/ww/en/ps/3SE5050-0CA00>

##### Image database (product images, 2D dimension drawings, 3D models, device circuit diagrams, EPLAN macros, ...)

[https://www.automation.siemens.com/bilddb/cax\\_de.aspx?mlfb=3SE5050-0CA00&lang=en](https://www.automation.siemens.com/bilddb/cax_de.aspx?mlfb=3SE5050-0CA00&lang=en)



---

last modified:

4/2/2025 