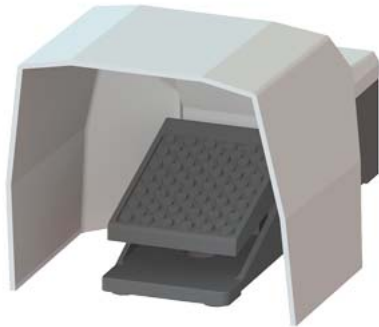


Foot switch, 1-pedal with cover, with latching Metal enclosure IP65, 1 NO+1 NC, Cable entry M20 x 1.5



product brand name	SIRIUS
product designation	foot switch
product type designation	3SE29
suitability for use safety switch	No
General technical data	
protection class IP	IP65
mechanical service life (operating cycles) typical	1 000 000
reference code according to IEC 81346-2	S
Substance Prohibitance (Date)	07/01/2006
SVHC substance name	Lead - 7439-92-1
Weight	1.46 kg
number of switching steps	1
number of the actuation pedals	1
minimum actuating force in directions of actuation	30 N
Ambient conditions	
ambient temperature during operation	-25 ... +80 °C
number of NC contacts for auxiliary contacts	1
number of NO contacts for auxiliary contacts	1
operational current at AC-15	
• at 230 V rated value	16 A
• at 400 V rated value	16 A
operational current at DC-13	
• at 24 V rated value	3 A
• at 250 V rated value	0.25 A
Enclosure	
material of the enclosure	metal
color	
• of the enclosure	black
• of the enclosure top part	grey
Actuator	
product feature	
• interlock	No
• latching	Yes
cable entry type	M20 x 1.5
Installation/ mounting/ dimensions	
height	138 mm
width	156 mm
depth	265 mm
Safety related data	
proportion of dangerous failures	

• with low demand rate according to SN 31920	50 %
• with high demand rate according to SN 31920	50 %
B10 value with high demand rate according to SN 31920	100 000
failure rate [FIT] with low demand rate according to SN 31920	100 FIT
IEC 61508	
T1 value for proof test interval or service life according to IEC 61508	20 a

Approvals Certificates

General Product Approval	Test Certificates
--------------------------	-------------------



EG-Konf.



CCC



[Miscellaneous](#)

Maritime application	other	Environment
----------------------	-------	-------------



[Confirmation](#)

[Environmental Confirmations](#)

Further information

Information on the packaging

<https://support.industry.siemens.com/cs/ww/en/view/109813875>

Information for data generation and storage

<https://support.industry.siemens.com/cs/ww/en/view/109995012>

Information- and Downloadcenter (Catalogs, Brochures,...)

<https://www.siemens.com/ic10>

Industry Mall (Online ordering system)

<https://mall.industry.siemens.com/mall/en/en/Catalog/product?mlfb=3SE2912-2AA20>

Cax online generator

<https://support.automation.siemens.com/WW/CAXorder/default.aspx?lang=en&mlfb=3SE2912-2AA20>

Service&Support (Manuals, Certificates, Characteristics, FAQs,...)

<https://support.industry.siemens.com/cs/ww/en/ps/3SE2912-2AA20>

Image database (product images, 2D dimension drawings, 3D models, device circuit diagrams, EPLAN macros, ...)

https://www.automation.siemens.com/bilddb/cax_de.aspx?mlfb=3SE2912-2AA20&lang=en

