



Safety position switch with separate actuator Molded-plastic enclosure lateral and face-end Slow-action contacts 1 NO+2 NC, 3 x (M20 x 1.5) Pull-out force 5 N Supplied without actuator

| | |
|--|------------------------------------|
| product brand name | SIRIUS |
| product designation | safety position switch |
| product type designation | 3SE22 |
| suitability for use safety switch | Yes |
| General technical data | |
| insulation voltage rated value | 500 V |
| surge voltage resistance rated value | 6 kV |
| protection class IP | IP67 |
| mechanical service life (operating cycles) typical | 1 000 000 |
| thermal current | 10 A |
| reference code according to IEC 81346-2 | B |
| active principle | mechanical |
| Substance Prohibitance (Date) | 07/01/2006 |
| SVHC substance name | Lead - 7439-92-1 |
| Weight | 0.147 kg |
| length of the sensor | 90 mm |
| width of the sensor | 52 mm |
| Ambient conditions | |
| ambient temperature | |
| • during operation | -30 ... +80 °C |
| • during storage | -30 ... +80 °C |
| explosion protection category for dust | none |
| design of the switching contact | mechanical |
| operating frequency rated value | 60 ... 50 Hz |
| number of NC contacts for auxiliary contacts | 2 |
| number of NO contacts for auxiliary contacts | 1 |
| operational current at AC-15 | |
| • at 230 V rated value | 4 A |
| operational current at DC-13 | |
| • at 24 V rated value | 4 A |
| Enclosure | |
| design of the housing | wide |
| material of the enclosure | glass fiber reinforced thermoplast |
| coating of the enclosure | Other types |
| design of the housing according to standard | No |
| Drive Head | |
| design of the actuating element | without |
| design of the switching function | positive opening |
| circuit principle | slow-action contacts |
| number of switching contacts safety-related | 2 |

| | |
|--|------------------------------------|
| cable entry type | 3x (M20 x 1.5) |
| Installation/ mounting/ dimensions | |
| mounting position | any |
| fastening method | screw fixing |
| Connections/ Terminals | |
| type of electrical connection | screw terminal |
| type of connectable conductor cross-sections | |
| • solid | 2x (0.75 ... 2.5 mm ²) |
| • finely stranded with core end processing | 2x (0.75 ... 2.5 mm ²) |
| design of the interface for safety-related communication | without |
| Communication/ Protocol | |
| design of the interface | without |
| Approvals Certificates | |
| General Product Approval | Test Certificates |



EG-Konf.





CCC



UL

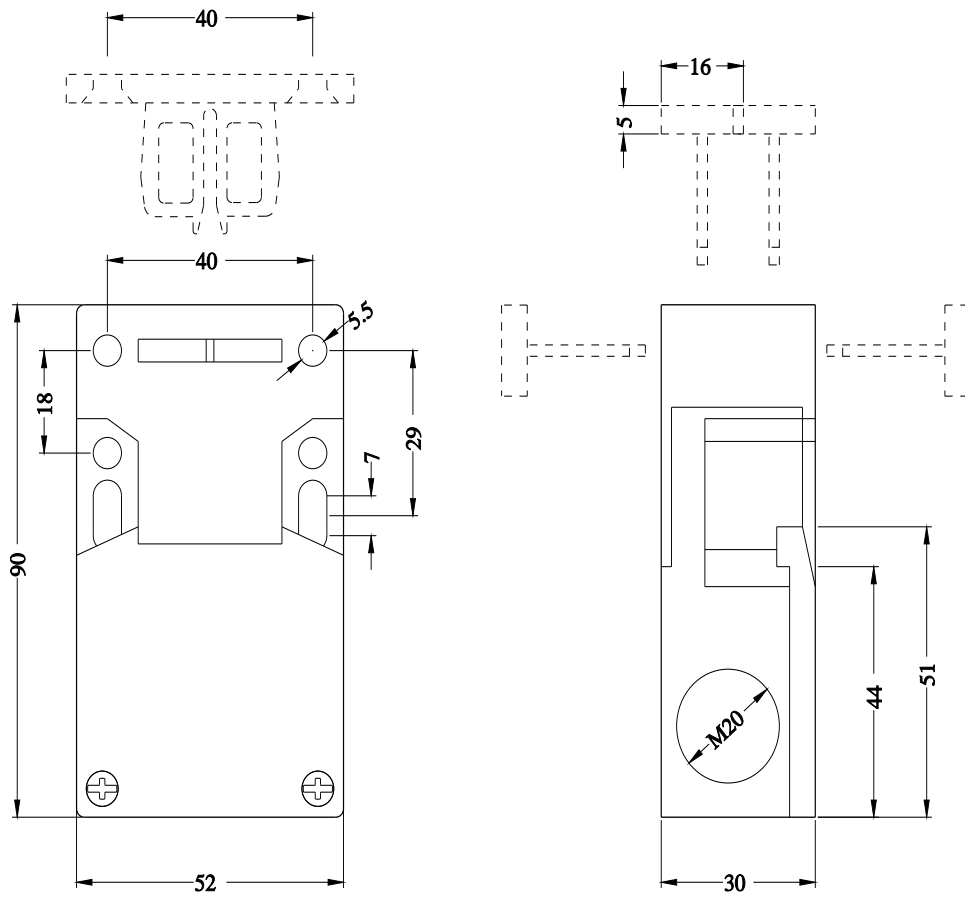


[Miscellaneous](#)

| | | |
|---|---|--|
| Maritime application | other | Environment |
|  |  | Confirmation Environmental Confirmations |

Further information

- Information on the packaging
<https://support.industry.siemens.com/cs/ww/en/view/109813875>
- Information for data generation and storage
<https://support.industry.siemens.com/cs/ww/en/view/109995012>
- Information- and Downloadcenter (Catalogs, Brochures,...)
<https://www.siemens.com/ic10>
- Industry Mall (Online ordering system)
<https://mall.industry.siemens.com/mall/en/en/Catalog/product?mlfb=3SE2243-0XX40>
- Cax online generator
<https://support.automation.siemens.com/WW/CAXorder/default.aspx?lang=en&mlfb=3SE2243-0XX40>
- Service&Support (Manuals, Certificates, Characteristics, FAQs,...)
<https://support.industry.siemens.com/cs/ww/en/ps/3SE2243-0XX40>
- Image database (product images, 2D dimension drawings, 3D models, device circuit diagrams, EPLAN macros, ...)
https://www.automation.siemens.com/bilddb/cax_de.aspx?mlfb=3SE2243-0XX40&lang=en



last modified:

4/2/2025 