

Siemens  
EcoTech



SIRIUS soft starter 200-480 V 210 A, 110-250 V AC spring-type terminals



<b>product brand name</b>	SIRIUS
<b>product category</b>	Hybrid switching devices
<b>product designation</b>	Soft starter
<b>product type designation</b>	3RW55
<b>manufacturer's article number</b>	<ul style="list-style-type: none"> <li>• of high feature HMI module usable <a href="#">3RW5980-0HF00</a></li> <li>• of communication module PROFINET standard usable <a href="#">3RW5980-0CS00</a></li> <li>• of communication module PROFINET high-feature usable <a href="#">3RW5950-0CH00</a></li> <li>• of communication module PROFIBUS usable <a href="#">3RW5980-0CP00</a></li> <li>• of communication module Modbus TCP usable <a href="#">3RW5980-0CT00</a></li> <li>• of communication module Modbus RTU usable <a href="#">3RW5980-0CR00</a></li> <li>• of communication module Ethernet/IP <a href="#">3RW5980-0CE00</a></li> <li>• of circuit breaker usable at 400 V <a href="#">3VA2325-7MN32-0AA0: Type of coordination 1, Iq = 65 kA, CLASS 10</a></li> <li>• of circuit breaker usable at 500 V <a href="#">3VA2325-7MN32-0AA0: Type of coordination 1, Iq = 65 kA, CLASS 10</a></li> <li>• of circuit breaker usable at 400 V at inside-delta circuit <a href="#">3VA2440-7MN32-0AA0: Type of coordination 1, Iq = 65 kA, CLASS 10</a></li> <li>• of circuit breaker usable at 500 V at inside-delta circuit <a href="#">3VA2440-7MN32-0AA0: Type of coordination 1, Iq = 65 kA, CLASS 10</a></li> <li>• of the gG fuse usable up to 690 V 2x3NA3354-6; Type of coordination 1, Iq = 65 kA</li> <li>• of the gG fuse usable at inside-delta circuit up to 500 V 2x3NA3354-6; Type of coordination 1, Iq = 65 kA</li> <li>• of full range R fuse link for semiconductor protection usable up to 690 V <a href="#">3NE1230-2; for supply systems up to 500 V; type of coordination 2, Iq = 65 kA</a></li> <li>• of back-up R fuse link for semiconductor protection usable up to 690 V <a href="#">3NE3333; Type of coordination 2, Iq = 65 kA</a></li> </ul>

General technical data	
<b>starting voltage [%]</b>	20 ... 100 %
<b>stopping voltage [%]</b>	50 %; non-adjustable
<b>start-up ramp time of soft starter</b>	0 ... 360 s
<b>ramp-down time of soft starter</b>	0 ... 360 s
<b>start torque [%]</b>	10 ... 100 %
<b>stopping torque [%]</b>	10 ... 100 %
<b>torque limitation [%]</b>	20 ... 200 %
<b>current limiting value [%] adjustable</b>	125 ... 800 %
<b>breakaway voltage [%] adjustable</b>	40 ... 100 %
<b>breakaway time adjustable</b>	0 ... 2 s
<b>number of parameter sets</b>	3
<b>accuracy class</b>	5 (based on IEC 61557-12)
<b>certificate of suitability</b>	
• CE marking	Yes
• UL approval	Yes

<ul style="list-style-type: none"> <li>• CSA approval</li> </ul>	Yes
<b>product component</b>	
<ul style="list-style-type: none"> <li>• HMI-High Feature</li> </ul>	Yes
<ul style="list-style-type: none"> <li>• is supported HMI-High Feature</li> </ul>	Yes
<b>product feature integrated bypass contact system</b>	Yes
<b>number of controlled phases</b>	3
<b>current unbalance limiting value [%]</b>	10 ... 60 %
<b>ground-fault monitoring limiting value [%]</b>	10 ... 95 %
<b>buffering time in the event of power failure</b>	
<ul style="list-style-type: none"> <li>• for main current circuit</li> </ul>	100 ms
<ul style="list-style-type: none"> <li>• for control circuit</li> </ul>	100 ms
<b>idle time adjustable</b>	0 ... 255 s
<b>insulation voltage rated value</b>	480 V
<b>degree of pollution</b>	3, acc. to IEC 60947-4-2
<b>impulse voltage rated value</b>	6 kV
<b>blocking voltage of the thyristor maximum</b>	1 400 V
<b>service factor</b>	1.15
<b>surge voltage resistance rated value</b>	6 kV
<b>maximum permissible voltage for protective separation</b>	
<ul style="list-style-type: none"> <li>• between main and auxiliary circuit</li> </ul>	480 V; does not apply for thermistor connection
<b>shock resistance</b>	15 g / 11 ms, from 6 g / 11 ms with potential contact lifting
<b>vibration resistance</b>	15 mm up to 6 Hz; 2 g up to 500 Hz
<b>recovery time after overload trip adjustable</b>	60 ... 1 800 s
utilization category according to IEC 60947-4-2	AC 53a
<b>reference code according to IEC 81346-2</b>	Q
<b>Substance Prohibitance (Date)</b>	02/15/2018
<b>SVHC substance name</b>	Lead - 7439-92-1 Lead monoxide (lead oxide) - 1317-36-8 2,2',6,6'-tetrabromo-4,4'-isopropylidenediphenol - 79-94-7 6,6'-di-tert-butyl-2,2'-methylenedi-p-cresol - 119-47-1 2-methyl-1-(4-methylthiophenyl)-2-morpholinopropan-1-one - 71868-10-5 Dibutylbis(pentane-2,4-dionato-O,O')tin - 22673-19-4 Lead titanium trioxide - 12060-00-3
<b>Weight</b>	11.685 kg
<b>product function</b>	
<ul style="list-style-type: none"> <li>• ramp-up (soft starting)</li> </ul>	Yes
<ul style="list-style-type: none"> <li>• ramp-down (soft stop)</li> </ul>	Yes
<ul style="list-style-type: none"> <li>• breakaway pulse</li> </ul>	Yes
<ul style="list-style-type: none"> <li>• adjustable current limitation</li> </ul>	Yes
<ul style="list-style-type: none"> <li>• creep speed in both directions of rotation</li> </ul>	Yes
<ul style="list-style-type: none"> <li>• pump ramp down</li> </ul>	Yes
<ul style="list-style-type: none"> <li>• DC braking</li> </ul>	Yes
<ul style="list-style-type: none"> <li>• motor heating</li> </ul>	Yes
<ul style="list-style-type: none"> <li>• min/max pointer</li> </ul>	Yes
<ul style="list-style-type: none"> <li>• trace function</li> </ul>	Yes
<ul style="list-style-type: none"> <li>• intrinsic device protection</li> </ul>	Yes
<ul style="list-style-type: none"> <li>• motor overload protection</li> </ul>	Yes; Full motor protection (thermistor motor protection and electronic motor overload protection) / When using the motor overload protection according to ATEX, an upstream contactor is required in inside-delta circuit.
<ul style="list-style-type: none"> <li>• evaluation of thermistor motor protection</li> </ul>	Yes; Type A PTC or Klixon / Thermoclick
<ul style="list-style-type: none"> <li>• inside-delta circuit</li> </ul>	Yes
<ul style="list-style-type: none"> <li>• auto-RESET</li> </ul>	Yes
<ul style="list-style-type: none"> <li>• manual RESET</li> </ul>	Yes
<ul style="list-style-type: none"> <li>• remote reset</li> </ul>	Yes
<ul style="list-style-type: none"> <li>• communication function</li> </ul>	Yes
<ul style="list-style-type: none"> <li>• operating measured value display</li> </ul>	Yes
<ul style="list-style-type: none"> <li>• event list</li> </ul>	Yes
<ul style="list-style-type: none"> <li>• error logbook</li> </ul>	Yes
<ul style="list-style-type: none"> <li>• via software parameterizable</li> </ul>	Yes
<ul style="list-style-type: none"> <li>• via software configurable</li> </ul>	Yes
<ul style="list-style-type: none"> <li>• screw terminal</li> </ul>	No
<ul style="list-style-type: none"> <li>• spring-loaded terminal</li> </ul>	Yes
<ul style="list-style-type: none"> <li>• <b>PROFenergy</b></li> </ul>	Yes; in connection with the PROFINET Standard and PROFINET High-Feature

<ul style="list-style-type: none"> <li>• <b>firmware update</b></li> <li>• <b>removable terminal for control circuit</b></li> <li>• voltage ramp</li> <li>• torque control</li> <li>• combined braking</li> <li>• analog output</li> <li>• programmable control inputs/outputs</li> <li>• condition monitoring</li> <li>• automatic parameterisation</li> <li>• application wizards</li> <li>• alternative run-down</li> <li>• emergency operation mode</li> <li>• reversing operation</li> <li>• soft starting at heavy starting conditions</li> </ul>	communication modules Yes Yes Yes Yes Yes Yes; 4 ... 20 mA (default) / 0 ... 10 V Yes Yes Yes Yes Yes Yes Yes Yes
<b>Power Electronics</b>	
<b>operational current</b>	
<ul style="list-style-type: none"> <li>• at 40 °C rated value</li> <li>• at 40 °C rated value minimum</li> <li>• at 50 °C rated value</li> <li>• at 60 °C rated value</li> </ul>	210 A 42 A 186 A 170 A
<b>operational current at inside-delta circuit</b>	
<ul style="list-style-type: none"> <li>• at 40 °C rated value</li> <li>• at 50 °C rated value</li> <li>• at 60 °C rated value</li> </ul>	364 A 322 A 294 A
<b>operating voltage</b>	
<ul style="list-style-type: none"> <li>• rated value</li> <li>• at inside-delta circuit rated value</li> </ul>	200 ... 480 V 200 ... 480 V
<b>relative negative tolerance of the operating voltage</b>	-15 %
<b>relative positive tolerance of the operating voltage</b>	10 %
<b>relative negative tolerance of the operating voltage at inside-delta circuit</b>	-15 %
<b>relative positive tolerance of the operating voltage at inside-delta circuit</b>	10 %
<b>operating power for 3-phase motors</b>	
<ul style="list-style-type: none"> <li>• at 230 V at 40 °C rated value</li> <li>• at 230 V at inside-delta circuit at 40 °C rated value</li> <li>• at 400 V at 40 °C rated value</li> <li>• at 400 V at inside-delta circuit at 40 °C rated value</li> </ul>	55 kW 110 kW 110 kW 200 kW
<b>Operating frequency 1 rated value</b>	50 Hz
<b>Operating frequency 2 rated value</b>	60 Hz
<b>relative negative tolerance of the operating frequency</b>	-10 %
<b>relative positive tolerance of the operating frequency</b>	10 %
<b>minimum load [%]</b>	10 %; Relative to set le
<b>power loss [W] for rated value of the current at AC</b>	
<ul style="list-style-type: none"> <li>• at 40 °C after startup</li> <li>• at 50 °C after startup</li> <li>• at 60 °C after startup</li> </ul>	63 W 56 W 51 W
<b>power loss [W] at AC at current limitation 350 %</b>	
<ul style="list-style-type: none"> <li>• at 40 °C during startup</li> <li>• at 50 °C during startup</li> <li>• at 60 °C during startup</li> </ul>	3 550 W 2 967 W 2 605 W
<b>type of the motor protection</b>	Electronic, tripping in the event of thermal overload of the motor
<b>Control circuit/ Control</b>	
<b>type of voltage of the control supply voltage</b>	AC
<b>control supply voltage at AC</b>	
<ul style="list-style-type: none"> <li>• at 50 Hz</li> <li>• at 60 Hz</li> </ul>	110 ... 250 V 110 ... 250 V
<b>relative negative tolerance of the control supply voltage at AC at 50 Hz</b>	-15 %
<b>relative positive tolerance of the control supply voltage at AC at 50 Hz</b>	10 %

relative negative tolerance of the control supply voltage at AC at 60 Hz	-15 %
relative positive tolerance of the control supply voltage at AC at 60 Hz	10 %
control supply voltage frequency	50 ... 60 Hz
relative negative tolerance of the control supply voltage frequency	-10 %
relative positive tolerance of the control supply voltage frequency	10 %
control supply current in standby mode rated value	100 mA
holding current in bypass operation rated value	150 mA
inrush current by closing the bypass contacts maximum	0.87 A
inrush current peak at application of control supply voltage maximum	43 A
duration of inrush current peak at application of control supply voltage	1.6 ms
design of the overvoltage protection	Varistor
design of short-circuit protection for control circuit	4 A gG fuse (I <sub>cu</sub> =1 kA), 6 A quick-acting fuse (I <sub>cu</sub> =1 kA), C1 miniature circuit breaker (I <sub>cu</sub> = 600 A), C6 miniature circuit breaker (I <sub>cu</sub> = 300 A); Is not part of scope of supply

Inputs/ Outputs	
number of digital inputs	4
• parameterizable	4
• number of digital outputs	4
• number of digital outputs parameterizable	3
• number of digital outputs not parameterizable	1
digital output version	3 normally-open contacts (NO) / 1 changeover contact (CO)
number of analog outputs	1
switching capacity current of the relay outputs	
• at AC-15 at 250 V rated value	3 A
• at DC-13 at 24 V rated value	1 A

Installation/ mounting/ dimensions	
mounting position	Vertical (can be rotated +/- 90° and tilted forward or backward +/- 22.5°)
fastening method	screw fixing
height	393 mm
width	210 mm
depth	203 mm
required spacing with side-by-side mounting	
• forwards	10 mm
• backwards	0 mm
• upwards	100 mm
• downwards	75 mm
• at the side	5 mm
weight without packaging	10.2 kg

Connections/ Terminals	
type of electrical connection	
• for main current circuit	busbar connection
• for control circuit	spring-loaded terminals
width of connection bar maximum	45 mm
wire length for thermistor connection	
• with conductor cross-section = 0.5 mm <sup>2</sup> maximum	50 m
• with conductor cross-section = 1.5 mm <sup>2</sup> maximum	150 m
• with conductor cross-section = 2.5 mm <sup>2</sup> maximum	250 m
type of connectable conductor cross-sections	
• for DIN cable lug for main contacts stranded	2x (50 ... 240 mm <sup>2</sup> )
• for DIN cable lug for main contacts finely stranded	2x (70 ... 240 mm <sup>2</sup> )
type of connectable conductor cross-sections	
• for control circuit solid	2x (0.25 ... 1.5 mm <sup>2</sup> )
• for control circuit finely stranded with core end processing	2x (0.25 ... 1.5 mm <sup>2</sup> )
• for AWG cables for control circuit solid	2x (24 ... 16)
• for AWG cables for control circuit finely stranded with core end processing	2x (24 ... 16)

<b>wire length</b>	
<ul style="list-style-type: none"> <li>• between soft starter and motor maximum</li> <li>• at the digital inputs at DC maximum</li> </ul>	<p>800 m</p> <p>1 000 m</p>
<b>tightening torque</b>	
<ul style="list-style-type: none"> <li>• for main contacts with screw-type terminals</li> <li>• for auxiliary and control contacts with screw-type terminals</li> </ul>	<p>14 ... 24 N·m</p> <p>0.8 ... 1.2 N·m</p>
<b>tightening torque [lbf·in]</b>	
<ul style="list-style-type: none"> <li>• for main contacts with screw-type terminals</li> <li>• for auxiliary and control contacts with screw-type terminals</li> </ul>	<p>124 ... 210 lbf·in</p> <p>7 ... 10.3 lbf·in</p>
<b>Ambient conditions</b>	
installation altitude at height above sea level maximum	5 000 m; Derating as of 1000 m, see catalog
<b>ambient temperature</b>	
<ul style="list-style-type: none"> <li>• during operation</li> <li>• during storage and transport</li> </ul>	<p>-25 ... +60 °C; Please observe derating at temperatures of 40 °C or above</p> <p>-40 ... +80 °C</p>
<b>environmental category</b>	
<ul style="list-style-type: none"> <li>• during operation according to IEC 60721</li> <li>• during storage according to IEC 60721</li> <li>• during transport according to IEC 60721</li> </ul>	<p>3K6 (no ice formation, only occasional condensation), 3C3 (no salt mist), 3S2 (sand must not get into the devices), 3M6</p> <p>1K6 (only occasional condensation), 1C2 (no salt mist), 1S2 (sand must not get inside the devices), 1M4</p> <p>2K2, 2C1, 2S1, 2M2 (max. fall height 0.3 m)</p>
<b>Environmental footprint</b>	
global warming potential [CO2 eq] total	833 kg
global warming potential [CO2 eq] during manufacturing	95.3 kg
global warming potential [CO2 eq] during sales	2.8 kg
global warming potential [CO2 eq] during operation	756 kg
global warming potential [CO2 eq] after end of life	-21 kg
Siemens Eco Profile (SEP)	Siemens EcoTech
<b>Electromagnetic compatibility</b>	
<b>EMC emitted interference</b>	acc. to IEC 60947-4-2: Class A
<b>Communication/ Protocol</b>	
<b>communication module is supported</b>	
<ul style="list-style-type: none"> <li>• PROFINET standard</li> <li>• PROFINET high-feature</li> <li>• EtherNet/IP</li> <li>• Modbus RTU</li> <li>• Modbus TCP</li> <li>• PROFIBUS</li> </ul>	<p>Yes</p> <p>Yes</p> <p>Yes</p> <p>Yes</p> <p>Yes</p> <p>Yes</p>
<b>UL/CSA ratings</b>	
<b>manufacturer's article number</b>	
<ul style="list-style-type: none"> <li>• of circuit breaker usable for Standard Faults <ul style="list-style-type: none"> <li>— at 460/480 V according to UL</li> <li>— 60/480 V according to UL</li> <li>— at 460/480 V at inside-delta circuit according to UL</li> <li>— 60/480 V at inside-delta circuit according to UL</li> <li>— at 575/600 V according to UL</li> <li>— 75/600 V at inside-delta circuit according to UL</li> <li>— at 575/600 V at inside-delta circuit according to UL</li> </ul> </li> <li>• of the fuse <ul style="list-style-type: none"> <li>— usable for Standard Faults up to 575/600 V according to UL</li> <li>— usable for High Faults up to 575/600 V according to UL</li> <li>— usable for Standard Faults at inside-delta circuit up to 575/600 V according to UL</li> <li>— usable for High Faults at inside-delta circuit up to 575/600 V according to UL</li> </ul> </li> </ul>	<p>Siemens type: 3VA53, max. 400 A or 3VA54, max. 600 A; Iq = 10 kA</p> <p>Siemens type: 3VA53, max. 400 A or 3VA54, max. 600 A; Iq max = 65 kA</p> <p>Siemens type: 3VA53, max. 400 A or 3VA54, max. 600 A; Iq = 10 kA</p> <p>Siemens type: 3VA53, max. 400 A or 3VA54, max. 600 A; Iq max = 65 kA</p> <p>Siemens type: 3VA53, max. 400 A or 3VA54, max. 600 A; Iq = 10 kA</p> <p>Siemens type: 3VA53, max. 400 A or 3VA54, max. 600 A; Iq max = 65 kA</p> <p>Siemens type: 3VA53, max. 400 A or 3VA54, max. 600 A; Iq = 10 kA</p> <p>Type: Class J / L, max. 700 A; Iq = 10 kA</p> <p>Type: Class J / L, max. 700 A; Iq = 100 kA</p> <p>Type: Class J / L, max. 700 A; Iq = 10 kA</p> <p>Type: Class J / L, max. 700 A; Iq = 100 kA</p>
<b>operating power [hp] for 3-phase motors</b>	
<ul style="list-style-type: none"> <li>• at 200/208 V at 50 °C rated value</li> <li>• at 220/230 V at 50 °C rated value</li> <li>• at 460/480 V at 50 °C rated value</li> <li>• at 200/208 V at inside-delta circuit at 50 °C rated value</li> </ul>	<p>60 hp</p> <p>60 hp</p> <p>150 hp</p> <p>100 hp</p>

<ul style="list-style-type: none"> <li>at 220/230 V at inside-delta circuit at 50 °C rated value</li> <li>at 460/480 V at inside-delta circuit at 50 °C rated value</li> </ul>	125 hp 250 hp
<b>contact rating of auxiliary contacts according to UL</b>	R300-B300
<b>Electrical Safety</b>	
<b>protection class IP on the front according to IEC 60529</b>	IP00; IP20 with cover
<b>touch protection on the front according to IEC 60529</b>	finger-safe, for vertical contact from the front with cover
<b>ATEX</b>	
<b>Safety Integrity Level (SIL) according to IEC 61508 relating to ATEX</b>	SIL 1
<b>PFHD with high demand rate according to IEC 61508 relating to ATEX</b>	5E-7 1/h
<b>PFDavg with low demand rate according to IEC 61508 relating to ATEX</b>	0.008
<b>hardware fault tolerance according to IEC 61508 relating to ATEX</b>	0
<b>T1 value for proof test interval or service life according to IEC 61508 relating to ATEX</b>	3 a
<b>certificate of suitability</b>	
<ul style="list-style-type: none"> <li>ATEX</li> <li>IECEX</li> <li>according to ATEX directive 2014/34/EU</li> </ul>	Yes Yes BVS 18 ATEX F 003 X
<b>type of protection according to ATEX directive 2014/34/EU</b>	II (2)G [Ex eb Gb] [Ex db Gb] [Ex pxb Gb], II (2)D [Ex tb Db] [Ex pxb Db], I (M2) [Ex db Mb]

**Approvals Certificates**

<b>General Product Approval</b>	<b>EMV</b>
---------------------------------	------------



<b>EMV</b>	<b>For use in hazardous locations</b>	<b>Test Certificates</b>	<b>Maritime application</b>
------------	---------------------------------------	--------------------------	-----------------------------

[KC](#)



[Type Test Certificates/Test Report](#)



<b>Maritime application</b>	<b>other</b>	<b>Environment</b>
-----------------------------	--------------	--------------------



[Confirmation](#)



**Siemens EcoTech**



**Environment**

[Environmental Confirmations](#)

**Further information**

**Information on the packaging**

<https://support.industry.siemens.com/cs/ww/en/view/109813875>

**Information for data generation and storage**

<https://support.industry.siemens.com/cs/ww/en/view/109995012>

**Information- and Downloadcenter (Catalogs, Brochures,...)**

<https://www.siemens.com/ic10>

**Industry Mall (Online ordering system)**

<https://mall.industry.siemens.com/mall/en/en/Catalog/product?mlfb=3RW5543-2HA14>

**Cax online generator**

<https://support.automation.siemens.com/WW/CAXorder/default.aspx?lang=en&mlfb=3RW5543-2HA14>

**Service&Support (Manuals, Certificates, Characteristics, FAQs,...)**

<https://support.industry.siemens.com/cs/ww/en/ps/3RW5543-2HA14>

Image database (product images, 2D dimension drawings, 3D models, device circuit diagrams, EPLAN macros, ...)

[https://www.automation.siemens.com/bilddb/cax\\_de.aspx?mlfb=3RW5543-2HA14&lang=en](https://www.automation.siemens.com/bilddb/cax_de.aspx?mlfb=3RW5543-2HA14&lang=en)

Characteristic: Tripping characteristics, I<sup>2</sup>t, Let-through current

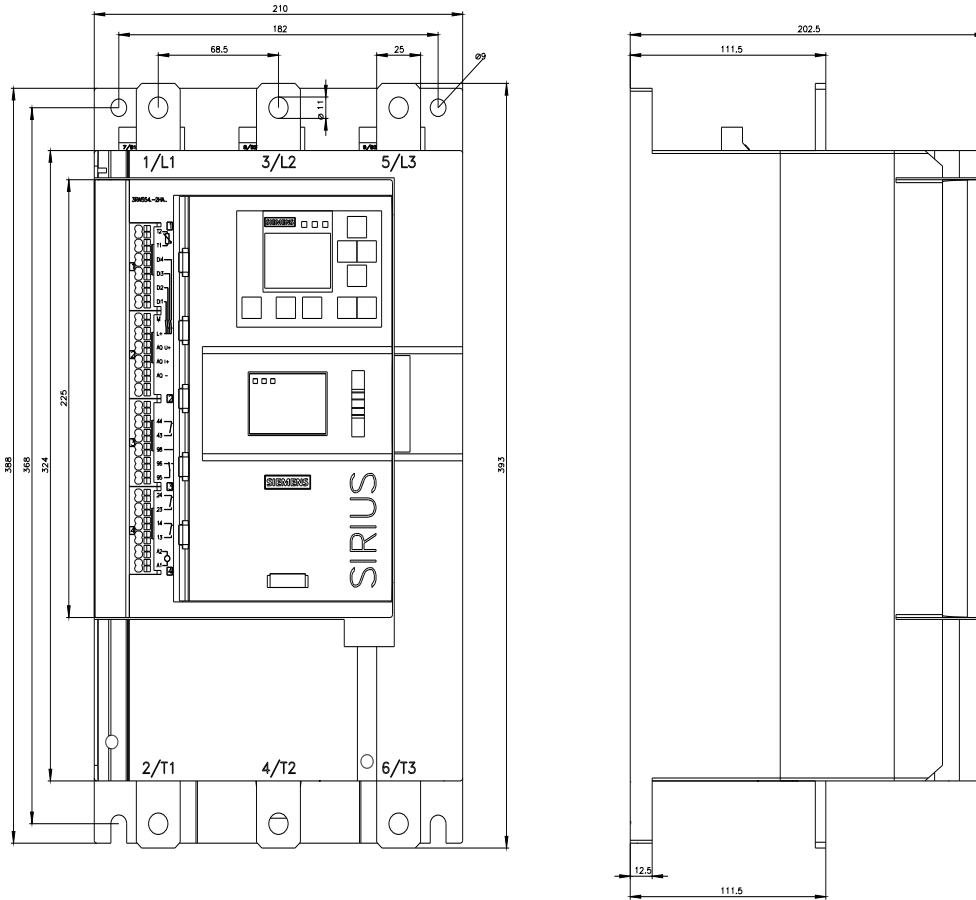
<https://support.industry.siemens.com/cs/ww/en/ps/3RW5543-2HA14/char>

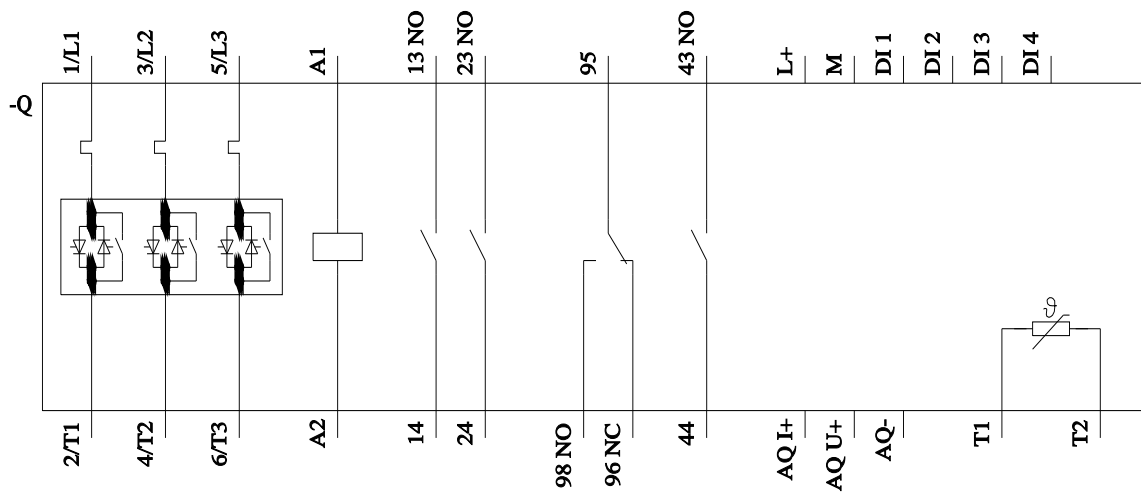
Characteristic: Installation altitude

<https://www.automation.siemens.com/bilddb/index.aspx?view=Search&mlfb=3RW5543-2HA14&objecttype=14&gridview=view1>

Simulation Tool for Soft Starters (STS)

<https://support.industry.siemens.com/cs/ww/en/view/101494917>





last modified:

9/5/2025 

