

Siemens
EcoTech



SIRIUS soft starter 200-600 V 13 A, 110-250 V AC spring-type terminals



product brand name	SIRIUS
product category	Hybrid switching devices
product designation	Soft starter
product type designation	3RW55
manufacturer's article number	
<ul style="list-style-type: none"> • of high feature HMI module usable • of communication module PROFINET standard usable • of communication module PROFINET high-feature usable • of communication module PROFIBUS usable • of communication module Modbus TCP usable • of communication module Modbus RTU usable • of communication module Ethernet/IP • of circuit breaker usable at 400 V • of circuit breaker usable at 500 V • of circuit breaker usable at 400 V at inside-delta circuit • of circuit breaker usable at 500 V at inside-delta circuit • of the gG fuse usable up to 690 V • of the gG fuse usable at inside-delta circuit up to 500 V • of full range R fuse link for semiconductor protection usable up to 690 V • of back-up R fuse link for semiconductor protection usable up to 690 V 	<ul style="list-style-type: none"> 3RW5980-0HF00 3RW5980-0CS00 3RW5950-0CH00 3RW5980-0CP00 3RW5980-0CT00 3RW5980-0CR00 3RW5980-0CE00 3RV2032-4TA10: Type of coordination 1, Iq = 65 kA, CLASS 10 3RV2032-4TA10: Type of coordination 1, Iq = 18 kA, CLASS 10 3RV2032-4DA10: Type of coordination 1, Iq = 65 kA, CLASS 10 3RV2032-4DA10: Type of coordination 1, Iq = 18 kA, CLASS 10 3NA3820-6; Type of coordination 1, Iq = 65 kA 3NA3820-6; Type of coordination 1, Iq = 65 kA 3NE1815-0; Type of coordination 2, Iq = 65 kA 3NE8017-1; Type of coordination 2, Iq = 65 kA

General technical data	
starting voltage [%]	20 ... 100 %
stopping voltage [%]	50 %; non-adjustable
start-up ramp time of soft starter	0 ... 360 s
ramp-down time of soft starter	0 ... 360 s
start torque [%]	10 ... 100 %
stopping torque [%]	10 ... 100 %
torque limitation [%]	20 ... 200 %
current limiting value [%] adjustable	125 ... 800 %
breakaway voltage [%] adjustable	40 ... 100 %
breakaway time adjustable	0 ... 2 s
number of parameter sets	3
accuracy class	5 (based on IEC 61557-12)
certificate of suitability	
<ul style="list-style-type: none"> • CE marking • UL approval 	<ul style="list-style-type: none"> Yes Yes

<ul style="list-style-type: none"> • CSA approval 	Yes
product component	
<ul style="list-style-type: none"> • HMI-High Feature 	Yes
<ul style="list-style-type: none"> • is supported HMI-High Feature 	Yes
product feature integrated bypass contact system	Yes
number of controlled phases	3
current unbalance limiting value [%]	10 ... 60 %
ground-fault monitoring limiting value [%]	10 ... 95 %
buffering time in the event of power failure	
<ul style="list-style-type: none"> • for main current circuit 	100 ms
<ul style="list-style-type: none"> • for control circuit 	100 ms
idle time adjustable	0 ... 255 s
insulation voltage rated value	600 V
degree of pollution	3, acc. to IEC 60947-4-2
impulse voltage rated value	6 kV
blocking voltage of the thyristor maximum	1 600 V
service factor	1.15
surge voltage resistance rated value	6 kV
maximum permissible voltage for protective separation	
<ul style="list-style-type: none"> • between main and auxiliary circuit 	600 V; does not apply for thermistor connection
shock resistance	15 g / 11 ms, from 6 g / 11 ms with potential contact lifting
vibration resistance	15 mm up to 6 Hz; 2 g up to 500 Hz
recovery time after overload trip adjustable	60 ... 1 800 s
utilization category according to IEC 60947-4-2	AC 53a
reference code according to IEC 81346-2	Q
Substance Prohibitance (Date)	02/15/2018
SVHC substance name	Lead - 7439-92-1 Lead monoxide (lead oxide) - 1317-36-8 2,2',6,6'-tetrabromo-4,4'-isopropylidenediphenol - 79-94-7 6,6'-di-tert-butyl-2,2'-methylenedi-p-cresol - 119-47-1 2-methyl-1-(4-methylthiophenyl)-2-morpholinopropan-1-one - 71868-10-5 Dibutylbis(pentane-2,4-dionato-O,O')tin - 22673-19-4 Lead titanium trioxide - 12060-00-3
Weight	3.2 kg
product function	
<ul style="list-style-type: none"> • ramp-up (soft starting) 	Yes
<ul style="list-style-type: none"> • ramp-down (soft stop) 	Yes
<ul style="list-style-type: none"> • breakaway pulse 	Yes
<ul style="list-style-type: none"> • adjustable current limitation 	Yes
<ul style="list-style-type: none"> • creep speed in both directions of rotation 	Yes
<ul style="list-style-type: none"> • pump ramp down 	Yes
<ul style="list-style-type: none"> • DC braking 	Yes
<ul style="list-style-type: none"> • motor heating 	Yes
<ul style="list-style-type: none"> • min/max pointer 	Yes
<ul style="list-style-type: none"> • trace function 	Yes
<ul style="list-style-type: none"> • intrinsic device protection 	Yes
<ul style="list-style-type: none"> • motor overload protection 	Yes; Full motor protection (thermistor motor protection and electronic motor overload protection) / When using the motor overload protection according to ATEX, an upstream contactor is required in inside-delta circuit.
<ul style="list-style-type: none"> • evaluation of thermistor motor protection 	Yes; Type A PTC or Klixon / Thermoclick
<ul style="list-style-type: none"> • inside-delta circuit 	Yes
<ul style="list-style-type: none"> • auto-RESET 	Yes
<ul style="list-style-type: none"> • manual RESET 	Yes
<ul style="list-style-type: none"> • remote reset 	Yes
<ul style="list-style-type: none"> • communication function 	Yes
<ul style="list-style-type: none"> • operating measured value display 	Yes
<ul style="list-style-type: none"> • event list 	Yes
<ul style="list-style-type: none"> • error logbook 	Yes
<ul style="list-style-type: none"> • via software parameterizable 	Yes
<ul style="list-style-type: none"> • via software configurable 	Yes
<ul style="list-style-type: none"> • screw terminal 	No
<ul style="list-style-type: none"> • spring-loaded terminal 	Yes
<ul style="list-style-type: none"> • PROFInergy 	Yes; in connection with the PROFINET Standard and PROFINET High-Feature

AC at 50 Hz	
relative positive tolerance of the control supply voltage at AC at 50 Hz	10 %
relative negative tolerance of the control supply voltage at AC at 60 Hz	-15 %
relative positive tolerance of the control supply voltage at AC at 60 Hz	10 %
control supply voltage frequency	50 ... 60 Hz
relative negative tolerance of the control supply voltage frequency	-10 %
relative positive tolerance of the control supply voltage frequency	10 %
control supply current in standby mode rated value	100 mA
holding current in bypass operation rated value	165 mA
inrush current by closing the bypass contacts maximum	0.2 A
inrush current peak at application of control supply voltage maximum	43 A
duration of inrush current peak at application of control supply voltage	1.6 ms
design of the overvoltage protection	Varistor
design of short-circuit protection for control circuit	4 A gG fuse (I _{cu} =1 kA), 6 A quick-acting fuse (I _{cu} =1 kA), C1 miniature circuit breaker (I _{cu} = 600 A), C6 miniature circuit breaker (I _{cu} = 300 A); Is not part of scope of supply
Inputs/ Outputs	
number of digital inputs	4
• parameterizable	4
• number of digital outputs	4
• number of digital outputs parameterizable	3
• number of digital outputs not parameterizable	1
digital output version	3 normally-open contacts (NO) / 1 changeover contact (CO)
number of analog outputs	1
switching capacity current of the relay outputs	
• at AC-15 at 250 V rated value	3 A
• at DC-13 at 24 V rated value	1 A
Installation/ mounting/ dimensions	
mounting position	Vertical (can be rotated +/- 90° and tilted forward or backward +/- 22.5°)
fastening method	screw fixing
height	275 mm
width	170 mm
depth	152 mm
required spacing with side-by-side mounting	
• forwards	10 mm
• backwards	0 mm
• upwards	100 mm
• downwards	75 mm
• at the side	5 mm
weight without packaging	2.3 kg
Connections/ Terminals	
type of electrical connection	
• for main current circuit	screw-type terminals
• for control circuit	spring-loaded terminals
wire length for thermistor connection	
• with conductor cross-section = 0.5 mm ² maximum	50 m
• with conductor cross-section = 1.5 mm ² maximum	150 m
• with conductor cross-section = 2.5 mm ² maximum	250 m
type of connectable conductor cross-sections	
• for main contacts	
— solid	2x (1.0 ... 2.5 mm ²), 2x (2.5 ... 10 mm ²)
— finely stranded with core end processing	2x (1.0 ... 2.5 mm ²), 2x (2.5 ... 6.0 mm ²)
• for AWG cables for main current circuit solid	2x (16 ... 12), 2x (14 ... 8)
type of connectable conductor cross-sections	
• for control circuit solid	2x (0.25 ... 1.5 mm ²)

<ul style="list-style-type: none"> • for control circuit finely stranded with core end processing • for AWG cables for control circuit solid • for AWG cables for control circuit finely stranded with core end processing 	<p>2x (0.25 ... 1.5 mm²)</p> <p>2x (24 ... 16)</p> <p>2x (24 ... 16)</p>
wire length <ul style="list-style-type: none"> • between soft starter and motor maximum • at the digital inputs at DC maximum 	<p>800 m</p> <p>1 000 m</p>
Ambient conditions	
installation altitude at height above sea level maximum	5 000 m; Derating as of 1000 m, see catalog
ambient temperature <ul style="list-style-type: none"> • during operation • during storage and transport 	<p>-25 ... +60 °C; Please observe derating at temperatures of 40 °C or above</p> <p>-25 ... +80 °C</p>
environmental category <ul style="list-style-type: none"> • during operation according to IEC 60721 • during storage according to IEC 60721 • during transport according to IEC 60721 	<p>3K6 (no ice formation, only occasional condensation), 3C3 (no salt mist), 3S2 (sand must not get into the devices), 3M6</p> <p>1K6 (only occasional condensation), 1C2 (no salt mist), 1S2 (sand must not get inside the devices), 1M4</p> <p>2K2, 2C1, 2S1, 2M2 (max. fall height 0.3 m)</p>
Environmental footprint	
global warming potential [CO2 eq] total	285 kg
global warming potential [CO2 eq] during manufacturing	50.8 kg
global warming potential [CO2 eq] during sales	0.827 kg
global warming potential [CO2 eq] during operation	240 kg
global warming potential [CO2 eq] after end of life	-7.11 kg
Siemens Eco Profile (SEP)	Siemens EcoTech
Electromagnetic compatibility	
EMC emitted interference	acc. to IEC 60947-4-2: Class A, Class B on request
Communication/ Protocol	
communication module is supported <ul style="list-style-type: none"> • PROFINET standard • PROFINET high-feature • EtherNet/IP • Modbus RTU • Modbus TCP • PROFIBUS 	<p>Yes</p> <p>No</p> <p>No</p> <p>No</p> <p>Yes</p> <p>Yes</p>
UL/CSA ratings	
manufacturer's article number <ul style="list-style-type: none"> • of circuit breaker usable for Standard Faults <ul style="list-style-type: none"> — at 460/480 V according to UL — 60/480 V according to UL — at 460/480 V at inside-delta circuit according to UL — 60/480 V at inside-delta circuit according to UL — at 575/600 V according to UL — 75/600 V at inside-delta circuit according to UL — at 575/600 V at inside-delta circuit according to UL • of the fuse <ul style="list-style-type: none"> — usable for Standard Faults up to 575/600 V according to UL — usable for High Faults up to 575/600 V according to UL — usable for Standard Faults at inside-delta circuit up to 575/600 V according to UL — usable for High Faults at inside-delta circuit up to 575/600 V according to UL 	<p>Siemens type: 3RV2742, max. 40 A or 3VA51, max. 40 A; Iq = 5 kA</p> <p>Siemens type: 3RV2742, max. 30 A or 3VA51, max. 35 A; Iq max = 65 kA</p> <p>Siemens type: 3RV2742, max. 40 A or 3VA51, max. 40 A; Iq = 5 kA</p> <p>Siemens type: 3RV2742, max. 30 A or 3VA51, max. 35 A; Iq max = 65 kA</p> <p>Siemens type: 3RV2742, max. 40 A or 3VA51, max. 40 A; Iq = 5 kA</p> <p>Siemens type: 3RV2742, max. 30 A or 3VA51, max. 35 A; Iq max = 65 kA</p> <p>Siemens type: 3RV2742, max. 40 A or 3VA51, max. 40 A; Iq = 5 kA</p> <p>Type: Class RK5 / K5, max. 50 A; Iq = 5 kA</p> <p>Type: Class J / L, max. 50 A; Iq = 100 kA</p> <p>Type: Class RK5 / K5, max. 50 A; Iq = 5 kA</p> <p>Type: Class J / L, max. 50 A; Iq = 100 kA</p>
operating power [hp] for 3-phase motors <ul style="list-style-type: none"> • at 200/208 V at 50 °C rated value • at 220/230 V at 50 °C rated value • at 460/480 V at 50 °C rated value • at 575/600 V at 50 °C rated value • at 200/208 V at inside-delta circuit at 50 °C rated value • at 220/230 V at inside-delta circuit at 50 °C rated value • at 460/480 V at inside-delta circuit at 50 °C rated value 	<p>2 hp</p> <p>3 hp</p> <p>7.5 hp</p> <p>10 hp</p> <p>5 hp</p> <p>5 hp</p> <p>10 hp</p>

• at 575/600 V at inside-delta circuit at 50 °C rated value	15 hp
contact rating of auxiliary contacts according to UL	R300-B300
Electrical Safety	
protection class IP on the front according to IEC 60529	IP20
touch protection on the front according to IEC 60529	finger-safe, for vertical contact from the front
ATEX	
Safety Integrity Level (SIL) according to IEC 61508 relating to ATEX	SIL 1
PFHD with high demand rate according to IEC 61508 relating to ATEX	5E-7 1/h
PFDavg with low demand rate according to IEC 61508 relating to ATEX	0.008
hardware fault tolerance according to IEC 61508 relating to ATEX	0
T1 value for proof test interval or service life according to IEC 61508 relating to ATEX	3 a
certificate of suitability	
• ATEX	Yes
• IECEx	Yes
• according to ATEX directive 2014/34/EU	BVS 18 ATEX F 003 X
type of protection according to ATEX directive 2014/34/EU	II (2)G [Ex eb Gb] [Ex db Gb] [Ex pxb Gb], II (2)D [Ex tb Db] [Ex pxb Db], I (M2) [Ex db Mb]

Approvals Certificates

General Product Approval	EMV
---------------------------------	------------



EMV	For use in hazardous locations	Test Certificates	Maritime application
------------	---------------------------------------	--------------------------	-----------------------------

[KC](#)



[Type Test Certificates/Test Report](#)



Maritime application	other	Environment
-----------------------------	--------------	--------------------



[Confirmation](#)



Environment

[Environmental Confirmations](#)

Further information

Information on the packaging

<https://support.industry.siemens.com/cs/ww/en/view/109813875>

Information for data generation and storage

<https://support.industry.siemens.com/cs/ww/en/view/109995012>

Information- and Downloadcenter (Catalogs, Brochures,...)

<https://www.siemens.com/ic10>

Industry Mall (Online ordering system)

<https://mall.industry.siemens.com/mall/en/en/Catalog/product?mlfb=3RW5513-3HA15>

Cax online generator

<https://support.automation.siemens.com/WW/CAXorder/default.aspx?lang=en&mlfb=3RW5513-3HA15>

Service&Support (Manuals, Certificates, Characteristics, FAQs,...)

<https://support.industry.siemens.com/cs/ww/en/ps/3RW5513-3HA15>

Image database (product images, 2D dimension drawings, 3D models, device circuit diagrams, EPLAN macros, ...)

https://www.automation.siemens.com/bilddb/cax_de.aspx?mlfb=3RW5513-3HA15&lang=en

Characteristic: Tripping characteristics, I_t, Let-through current

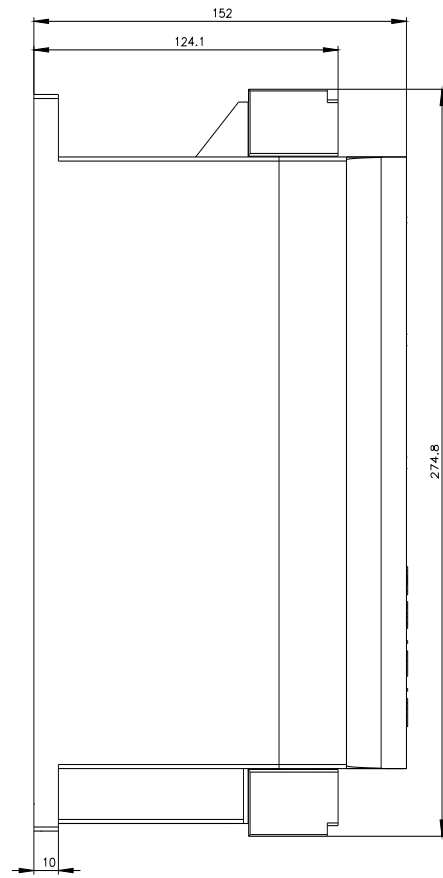
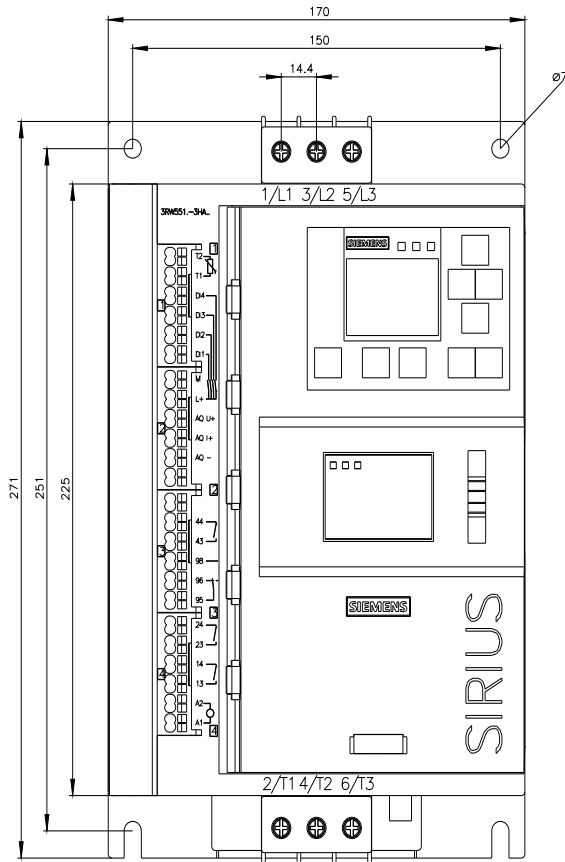
<https://support.industry.siemens.com/cs/ww/en/ps/3RW5513-3HA15/char>

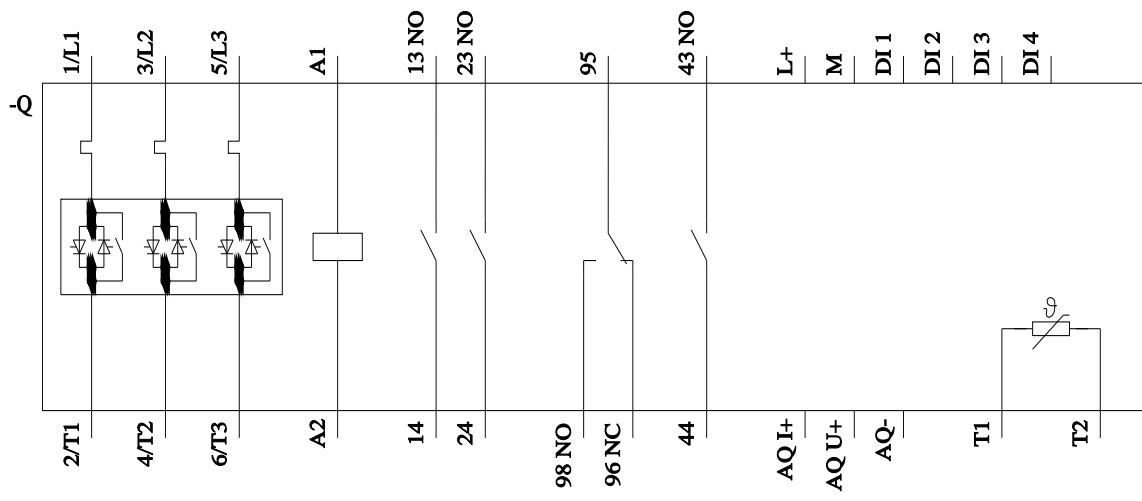
Characteristic: Installation altitude

<https://www.automation.siemens.com/bilddb/index.aspx?view=Search&mlfb=3RW5513-3HA15&objecttype=14&gridview=view1>

Simulation Tool for Soft Starters (STS)

<https://support.industry.siemens.com/cs/ww/en/view/101494917>





last modified:

9/5/2025 