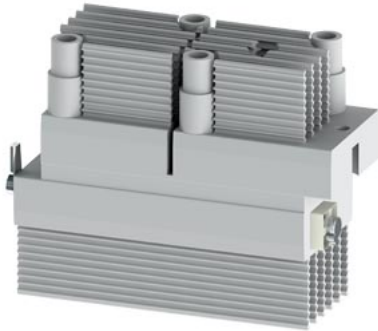


Power semiconductor module NTC 690 V, 3RW4465/4466, 1214 A



product designation	Power semiconductor module		
product type designation	3RW47		
<b>General technical data</b>			
Substance Prohibittance (Date)	05/01/2012		
SVHC substance name	Lead - 7439-92-1 2-methyl-1-(4-methylthiophenyl)-2-morpholinopropan-1-one - 71868-10-5		
Weight	9.88 kg		
<b>Approvals Certificates</b>			
General Product Approval	EMV	other	Environment



[KC](#)



[Confirmation](#)

[Environmental Confirmations](#)

**Further information**

- Information on the packaging  
<https://support.industry.siemens.com/cs/ww/en/view/109813875>
- Information for data generation and storage  
<https://support.industry.siemens.com/cs/ww/en/view/109995012>
- Information- and Downloadcenter (Catalogs, Brochures,...)  
<https://www.siemens.com/ic10>
- Industry Mall (Online ordering system)  
<https://mall.industry.siemens.com/mall/en/en/Catalog/product?mlfb=3RW4766-0NC00>
- Cax online generator  
<https://support.automation.siemens.com/WW/CAXorder/default.aspx?lang=en&mlfb=3RW4766-0NC00>
- Service&Support (Manuals, Certificates, Characteristics, FAQs,...)  
<https://support.industry.siemens.com/cs/ww/en/ps/3RW4766-0NC00>
- Image database (product images, 2D dimension drawings, 3D models, device circuit diagrams, EPLAN macros, ...)  
[https://www.automation.siemens.com/bilddb/cax\\_de.aspx?mlfb=3RW4766-0NC00&lang=en](https://www.automation.siemens.com/bilddb/cax_de.aspx?mlfb=3RW4766-0NC00&lang=en)
- Characteristic: Tripping characteristics, I<sub>t</sub>, Let-through current  
<https://support.industry.siemens.com/cs/ww/en/ps/3RW4766-0NC00/char>
- Characteristic: Installation altitude  
<https://www.automation.siemens.com/bilddb/index.aspx?view=Search&mlfb=3RW4766-0NC00&objecttype=14&gridview=view1>
- Simulation Tool for Soft Starters (STS)  
<https://support.industry.siemens.com/cs/ww/en/view/101494917>

last modified:

4/2/2025

