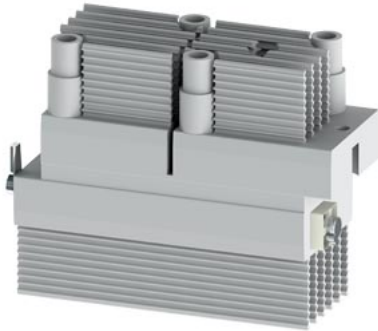


Power semiconductor module NTC 690 V, 3RW4456/4457/4458, 970 A



product designation	Power semiconductor module		
product type designation	3RW47		
<b>General technical data</b>			
Substance Prohibittance (Date)	05/01/2012		
SVHC substance name	2-methyl-1-(4-methylthiophenyl)-2-morpholinopropan-1-one - 71868-10-5		
Weight	3.415 kg		
<b>Approvals Certificates</b>			
General Product Approval	EMV	other	Environment



[KC](#)



[Confirmation](#)

[Environmental Confirmations](#)

**Further information**

Information on the packaging

<https://support.industry.siemens.com/cs/ww/en/view/109813875>

Information for data generation and storage

<https://support.industry.siemens.com/cs/ww/en/view/109995012>

Information- and Downloadcenter (Catalogs, Brochures,...)

<https://www.siemens.com/ic10>

Industry Mall (Online ordering system)

<https://mall.industry.siemens.com/mall/en/en/Catalog/product?mlfb=3RW4758-0NC00>

Cax online generator

<https://support.automation.siemens.com/WW/CAXorder/default.aspx?lang=en&mlfb=3RW4758-0NC00>

Service&Support (Manuals, Certificates, Characteristics, FAQs,...)

<https://support.industry.siemens.com/cs/ww/en/ps/3RW4758-0NC00>

Image database (product images, 2D dimension drawings, 3D models, device circuit diagrams, EPLAN macros, ...)

[https://www.automation.siemens.com/bilddb/cax\\_de.aspx?mlfb=3RW4758-0NC00&lang=en](https://www.automation.siemens.com/bilddb/cax_de.aspx?mlfb=3RW4758-0NC00&lang=en)

Characteristic: Tripping characteristics, I<sup>2</sup>t, Let-through current

<https://support.industry.siemens.com/cs/ww/en/ps/3RW4758-0NC00/char>

Characteristic: Installation altitude

<https://www.automation.siemens.com/bilddb/index.aspx?view=Search&mlfb=3RW4758-0NC00&objecttype=14&gridview=view1>

Simulation Tool for Soft Starters (STS)

<https://support.industry.siemens.com/cs/ww/en/view/101494917>

last modified:

4/2/2025

