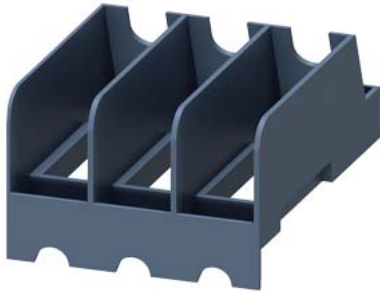


Phase barriers Increased air clearances / creepage distances for 3RV2 size S00/S0 with screw terminal



product brand name	SIRIUS
product category	Phase barriers
product designation	phase barrier
design of the product	phase barrier for 3RV2
product type designation	3RV29

General technical data

certificate of suitability	CE / UL / CSA / CCC
Substance Prohibitance (Date)	10/01/2009
Weight	0.025 kg

Ambient conditions

ambient temperature	
<ul style="list-style-type: none"> during operation during storage 	<p>-20 ... +70 °C</p> <p>-50 ... +80 °C</p>

Installation/ mounting/ dimensions

fastening method	clip-on
height	29.3 mm
width	44.8 mm
depth	60.6 mm

Approvals Certificates

General Product Approval	Test Certificates
--------------------------	-------------------



[Type Test Certificates/Test Report](#)

[Special Test Certificate](#)

Maritime application



other	Railway	Environment
-------	---------	-------------

[Miscellaneous](#)



[Confirmation](#)



[Special Test Certificate](#)

[Environmental Confirmations](#)

Further information

Information on the packaging

<https://support.industry.siemens.com/cs/ww/en/view/109813875>

Information for data generation and storage

<https://support.industry.siemens.com/cs/ww/en/view/109995012>

Information- and Downloadcenter (Catalogs, Brochures,...)

<https://www.siemens.com/ic10>

Industry Mall (Online ordering system)

<https://mall.industry.siemens.com/mall/en/en/Catalog/product?mlfb=3RV2928-1K>

Cax online generator

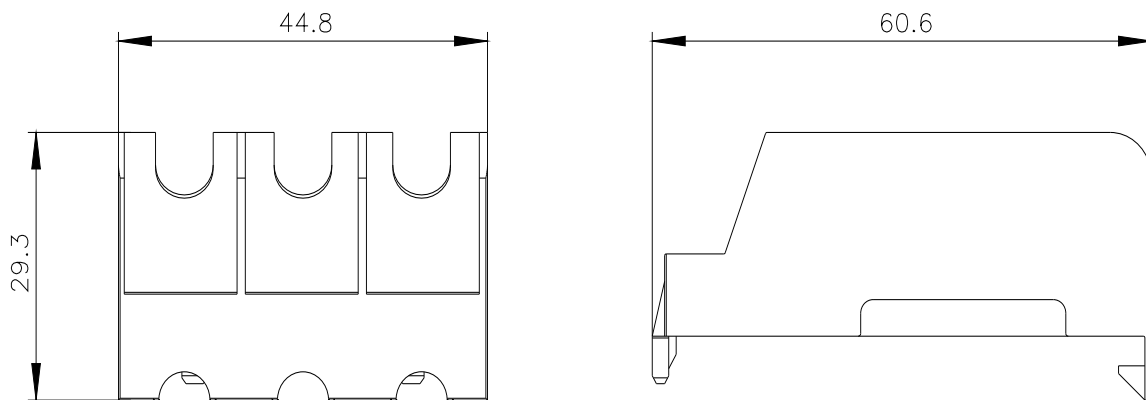
<https://support.automation.siemens.com/WW/CAXorder/default.aspx?lang=en&mlfb=3RV2928-1K>

Service&Support (Manuals, Certificates, Characteristics, FAQs,...)

<https://support.industry.siemens.com/cs/ww/en/ps/3RV2928-1K>

Image database (product images, 2D dimension drawings, 3D models, device circuit diagrams, EPLAN macros, ...)

https://www.automation.siemens.com/bilddb/cax_de.aspx?mlfb=3RV2928-1K&lang=en



last modified:

4/2/2025 