



Contactor, AC-1, 500 A/400 V/40 °C, S12, 4-pole, 100-250 V AC/DC, 2 NO+2 NC, Connection rail/ screw terminal

product brand name	SIRIUS
product designation	Contactor
product type designation	3RT13
General technical data	
size of contactor	S12
product extension	
• function module for communication	No
• auxiliary switch	Yes
power loss [W] for rated value of the current	
• at AC in hot operating state	200 W
• at AC in hot operating state per pole	50 W
• without load current share typical	4.5 W
type of calculation of power loss depending on pole	quadratic
insulation voltage	
• of main circuit with degree of pollution 3 rated value	1 000 V
• of the auxiliary and control circuit with degree of pollution 3 rated value	690 V
surge voltage resistance	
• of main circuit rated value	8 kV
• of auxiliary circuit rated value	6 kV
reference code according to IEC 81346-2	Q
Substance Prohibitance (Date)	03/27/2017
Weight	6.604 kg
Ambient conditions	
installation altitude at height above sea level maximum	2 000 m
ambient temperature	
• during operation	-40 ... +60 °C
• during storage	-40 ... +70 °C
relative humidity minimum	10 %
relative humidity at 55 °C according to IEC 60068-2-30 maximum	95 %
Main circuit	
number of poles for main current circuit	4
number of NO contacts for main contacts	4
type of voltage for main current circuit	AC
operational current	
• at AC-1 at 400 V at ambient temperature 40 °C rated value	500 A
• at AC-1 — up to 690 V at ambient temperature 40 °C rated value	500 A

— up to 690 V at ambient temperature 60 °C rated value	400 A
— up to 1000 V at ambient temperature 40 °C rated value	375 A
— up to 1000 V at ambient temperature 60 °C rated value	325 A
● at AC-3	
— at 400 V rated value	305 A
minimum cross-section in main circuit at maximum AC-1 rated value	300 mm ²
operating power	
● at AC-3 at 400 V rated value	160 kW
no-load switching frequency	
● at AC	300 1/h
● at DC	300 1/h
Control circuit/ Control	
type of voltage	AC
type of voltage of the control supply voltage	AC/DC
control supply voltage at AC	
● at 50 Hz rated value	100 ... 250 V
● at 60 Hz rated value	100 ... 250 V
control supply voltage at DC rated value	100 ... 250 V
operating range factor control supply voltage rated value of magnet coil at DC	
● initial value	0.8
● full-scale value	1.1
operating range factor control supply voltage rated value of magnet coil at AC	
● at 50 Hz	0.85 ... 1.1
● at 60 Hz	0.85 ... 1.1
design of the surge suppressor	with varistor
apparent pick-up power of magnet coil at AC	
● at 50 Hz	385 VA
● at 60 Hz	385 VA
apparent holding power of magnet coil at AC	
● at 50 Hz	17.5 VA
● at 60 Hz	17.5 VA
closing power of magnet coil at DC	410 W
holding power of magnet coil at DC	4.5 W
closing delay	
● at AC	30 ... 60 ms
● at DC	30 ... 60 ms
opening delay	
● at AC	45 ... 80 ms
● at DC	45 ... 80 ms
control version of the switch operating mechanism	Standard A1 - A2
Auxiliary circuit	
number of NC contacts for auxiliary contacts	2
● attachable	2
● instantaneous contact	2
number of NO contacts for auxiliary contacts	2
● attachable	2
● instantaneous contact	2
operational current at AC-15	
● at 230 V rated value	4 A
● at 400 V rated value	3 A
● at 500 V rated value	2 A
● at 690 V rated value	2 A
operational current at DC-13	
● at 24 V rated value	3 A
● at 48 V rated value	1.5 A
● at 110 V rated value	0.55 A

<ul style="list-style-type: none"> • at 125 V rated value • at 220 V rated value 	<p>0.55 A</p> <p>0.3 A</p>
UL/CSA ratings	
contact rating of auxiliary contacts according to UL	A600 / Q300
Short-circuit protection	
design of the fuse link	
<ul style="list-style-type: none"> • for short-circuit protection of the main circuit <ul style="list-style-type: none"> — with type of coordination 2 required • for short-circuit protection of the auxiliary switch required 	<p>gG: 630 A (500 V, 100 kA)</p> <p>gG: 10 A (690 V, 1 kA)</p>
Installation/ mounting/ dimensions	
mounting position	For vertical mounting surface can be rotated +/-180°, and with 0° rotation can be tilted forward or backward +/- 30°, or standing
fastening method side-by-side mounting	Yes
fastening method	screw fixing
height	225 mm
width	184 mm
depth	180 mm
required spacing	
<ul style="list-style-type: none"> • with side-by-side mounting <ul style="list-style-type: none"> — forwards — upwards — downwards — at the side • for grounded parts <ul style="list-style-type: none"> — forwards — upwards — at the side — downwards • for live parts <ul style="list-style-type: none"> — forwards — upwards — downwards — at the side 	<p>20 mm</p> <p>10 mm</p> <p>10 mm</p> <p>0 mm</p> <p>20 mm</p> <p>10 mm</p> <p>10 mm</p> <p>10 mm</p> <p>20 mm</p> <p>10 mm</p> <p>10 mm</p> <p>10 mm</p>
net weight	6.5 kg
Connections/ Terminals	
type of electrical connection	
<ul style="list-style-type: none"> • for main current circuit • for auxiliary and control circuit • at contactor for auxiliary contacts • of magnet coil 	<p>Connection bar, broadened > 450A required</p> <p>screw-type terminals</p> <p>Screw-type terminals</p> <p>Screw-type terminals</p>
connectable conductor cross-section for auxiliary contacts	
<ul style="list-style-type: none"> • solid or stranded • finely stranded with core end processing 	<p>1 ... 4 mm²</p> <p>0.75 ... 2.5 mm²</p>
type of connectable conductor cross-sections	
<ul style="list-style-type: none"> • for auxiliary contacts <ul style="list-style-type: none"> — solid — solid or stranded — finely stranded with core end processing • for AWG cables for auxiliary contacts 	<p>1x (1 ... 4mm²), 2x (1 ... 4mm²)</p> <p>1x (1 ... 4mm²), 2x (1 ... 4mm²)</p> <p>1x (0.75 ... 2.5 mm²), 2x (0.75 ... 2.5 mm²)</p> <p>1x (AWG 18 ... 14), 2x (AWG 18 ... 14)</p>
AWG number as coded connectable conductor cross section for auxiliary contacts	18 ... 14
Safety related data	
product function	
<ul style="list-style-type: none"> • mirror contact according to IEC 60947-4-1 • positively driven operation according to IEC 60947-5-1 	<p>Yes</p> <p>No</p>
Electrical Safety	
protection class IP on the front according to IEC 60529	IP00; IP20 with box terminal/cover
touch protection on the front according to IEC 60529	finger-safe, for vertical contact from the front with box terminal/cover
Communication/ Protocol	
product function bus communication	No
Approvals Certificates	



[Special Test Certificate](#)



[Confirmation](#)

[Miscellaneous](#)

[Special Test Certificate](#)

[Environmental Confirmations](#)

Further information

Information on the packaging

<https://support.industry.siemens.com/cs/ww/en/view/109813875>

Information for data generation and storage

<https://support.industry.siemens.com/cs/ww/en/view/109995012>

Information- and Downloadcenter (Catalogs, Brochures,...)

<https://www.siemens.com/ic10>

Industry Mall (Online ordering system)

<https://mall.industry.siemens.com/mall/en/en/Catalog/product?mlfb=3RT1374-6AP36>

Cax online generator

<https://support.automation.siemens.com/WW/CAXorder/default.aspx?lang=en&mlfb=3RT1374-6AP36>

Service&Support (Manuals, Certificates, Characteristics, FAQs,...)

<https://support.industry.siemens.com/cs/ww/en/ps/3RT1374-6AP36>

Image database (product images, 2D dimension drawings, 3D models, device circuit diagrams, EPLAN macros, ...)

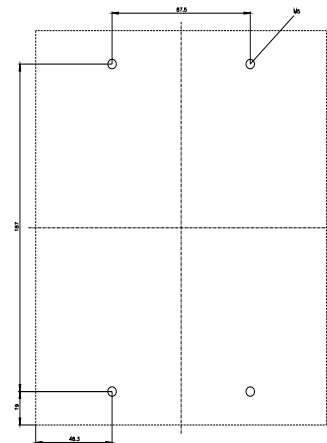
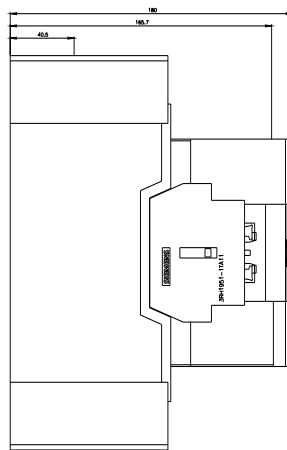
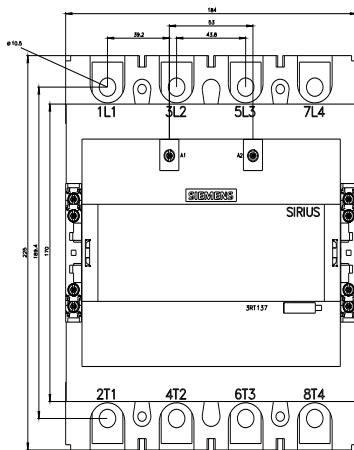
https://www.automation.siemens.com/bilddb/cax_de.aspx?mlfb=3RT1374-6AP36&lang=en

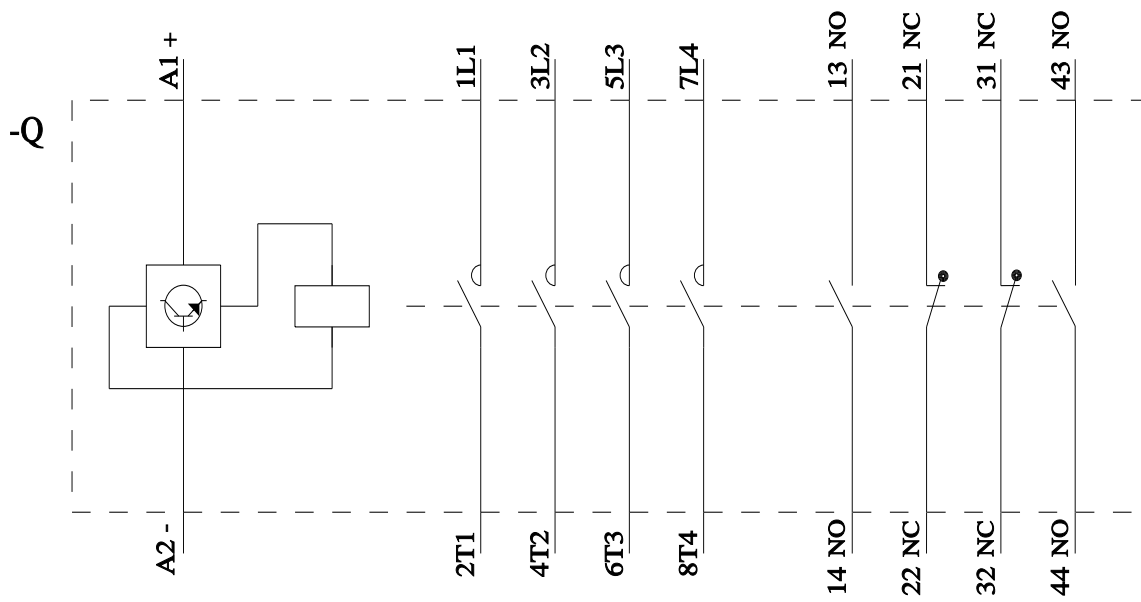
Characteristic: Tripping characteristics, I²t, Let-through current

<https://support.industry.siemens.com/cs/ww/en/ps/3RT1374-6AP36/char>

Further characteristics (e.g. electrical endurance, switching frequency)

<https://www.automation.siemens.com/bilddb/index.aspx?view=Search&mlfb=3RT1374-6AP36&objecttype=14&gridview=view1>





last modified:

11/11/2025 