







connecting comb 2-pole (only suitable for signal converter SIRIUS 3RS7 and coupling relay SIRIUS 3RQ3)



product brand name	SIRIUS		
product category	Connecting combs		
product designation	Connecting comb		
design of the product	For linking the same potentials, current carrying capacity for infeed max. 6 A/2-pole		
product type designation	3RQ3		
General technical data			
display version LED	No		
product component	No		
• semi-conductor output	No		
flammability class of enclosure material	UL94 V-0		
reference code according to IEC 81346-2	X		
Substance Prohibittance (Date)	03/25/2015		
Weight	0.6 g		
Mechanical data			
product component plug-in socket	No		
Connections/ Terminals			
product function removable terminal	No		
Installation/ mounting/ dimensions			
height	3.3 mm		
width	12.5 mm		
depth	11 mm		
Ambient conditions			
ambient temperature	-25 ... +60 °C		
• during operation	-25 ... +60 °C		
• during storage	-40 ... +85 °C		
• during transport	-40 ... +85 °C		
Approvals Certificates			
General Product Approval	EMV	Maritime application	
			
			
			
other	Environment		



[Confirmation](#)

[Environmental Con-
firmations](#)

Further information

Information on the packaging

<https://support.industry.siemens.com/cs/ww/en/view/109813875>

Information for data generation and storage

<https://support.industry.siemens.com/cs/ww/en/view/109995012>

Information- and Downloadcenter (Catalogs, Brochures,...)

<https://www.siemens.com/ic10>

Industry Mall (Online ordering system)

<https://mall.industry.siemens.com/mall/en/en/Catalog/product?mlfb=3RQ3901-0A>

Cax online generator

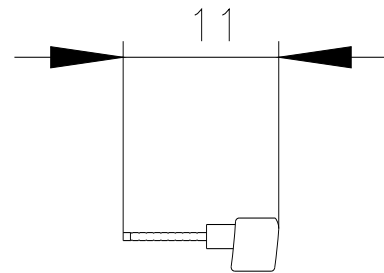
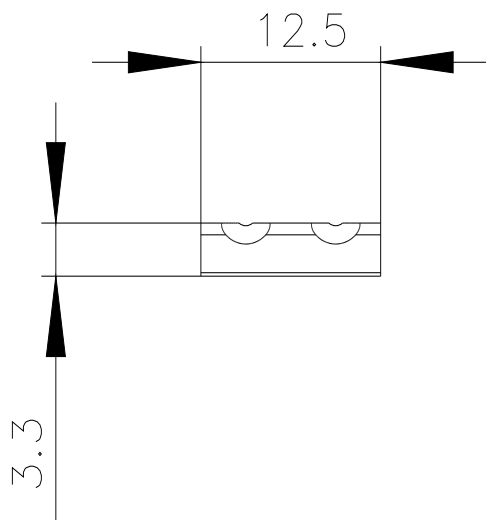
<https://support.automation.siemens.com/WW/CAXorder/default.aspx?lang=en&mlfb=3RQ3901-0A>

Service&Support (Manuals, Certificates, Characteristics, FAQs,...)

<https://support.industry.siemens.com/cs/ww/en/ps/3RQ3901-0A>

Image database (product images, 2D dimension drawings, 3D models, device circuit diagrams, EPLAN macros, ...)

https://www.automation.siemens.com/bilddb/cax_de.aspx?mlfb=3RQ3901-0A&lang=en



last modified:

4/1/2025