



Reversing starter High Feature; Electronic switching; Electronic overload protection up to 0.25 kW / 400 V; Adjustment range 0.3 .. 1 A; PROFlenergy; Option: 3DI/LC module

| | |
|--|---|
| product brand name | SIMATIC |
| product category | Motor starter |
| product designation | Reversing starter |
| product type designation | ET 200SP |
| General technical data | |
| equipment version according to IEC 60947-4-2 | 3 |
| product function | Reversing starter |
| <ul style="list-style-type: none"> on-site operation intrinsic device protection remote firmware update for power supply reverse polarity protection | Yes Yes Yes Yes |
| power loss [W] for rated value of the current | 0 W |
| <ul style="list-style-type: none"> at AC in hot operating state per pole | |
| insulation voltage rated value | 500 V |
| degree of pollution | 2 |
| overvoltage category | III |
| surge voltage resistance rated value | 6 kV |
| maximum permissible voltage for protective separation | 500 V |
| <ul style="list-style-type: none"> between main and auxiliary circuit | |
| consumed current maximum | 140 mA |
| shock resistance | 6g / 11 ms |
| vibration resistance | 15 mm to 6 Hz; 2g to 500 Hz |
| operating frequency maximum | 1 1/s |
| mechanical service life (operating cycles) of the main contacts typical | 30 000 000 |
| type of coordination | 1 |
| utilization category | AC-53a: 1 A: (8-0,7: 70-32) |
| <ul style="list-style-type: none"> according to IEC 60947-4-2 | |
| reference code according to IEC 81346-2 | Q |
| Substance Prohibitance (Date) | 04/15/2016 |
| SVHC substance name | Lead - 7439-92-1 Lead monoxide (lead oxide) - 1317-36-8 2,2',6,6'-tetrabromo-4,4'-isopropylidenediphenol - 79-94-7 6,6'-di-tert-butyl-2,2'-methylenedi-p-cresol - 119-47-1 |
| Weight | 0.451 kg |
| product function | |
| <ul style="list-style-type: none"> direct start reverse starting | Yes Yes |
| product component motor brake output | No |
| product function short circuit protection | Yes |
| design of short-circuit protection | fuse |

| | |
|---|--|
| maximum short-circuit current breaking capacity (Icu) | |
| <ul style="list-style-type: none"> at 400 V rated value at 500 V rated value at 500 V according to UL 60947 rated value | 55 kA 55 kA 100 kA |
| maximum short-circuit current breaking capacity (Icu) in the IT network | |
| <ul style="list-style-type: none"> at 400 V rated value at 500 V rated value | 55 kA 55 kA |
| Electromagnetic compatibility | |
| EMC emitted interference according to IEC 60947-1 | class A |
| EMC immunity according to IEC 60947-1 | Class A |
| conducted interference | |
| <ul style="list-style-type: none"> due to burst according to IEC 61000-4-4 due to conductor-earth surge according to IEC 61000-4-5 due to conductor-conductor surge according to IEC 61000-4-5 due to high-frequency radiation according to IEC 61000-4-6 | 2 kV 2 kV 1 kV Class A |
| field-based interference according to IEC 61000-4-3 | 10 V/m |
| electrostatic discharge according to IEC 61000-4-2 | 8 kV air discharge |
| conducted HF interference emissions according to CISPR11 | Class A for industrial environment |
| field-bound HF interference emission according to CISPR11 | Class A for industrial environment |
| Safety related data | |
| MTBF | 47 a |
| Electrical Safety | |
| touch protection against electrical shock | finger-safe |
| protection class IP on the front according to IEC 60529 | IP20 |
| touch protection on the front according to IEC 60529 | finger-safe |
| Main circuit | |
| number of poles for main current circuit | 3 |
| design of the switching contact | Hybrid |
| adjustable current response value current of the current-dependent overload release | 0.3 ... 1 A |
| minimum load [%] | 50 %; from smallest adjustable rated current |
| type of the motor protection | solid-state |
| operating voltage rated value | 48 ... 500 V |
| relative symmetrical tolerance of the operating voltage | 10 % |
| operating frequency 1 rated value | 50 Hz |
| operating frequency 2 rated value | 60 Hz |
| relative symmetrical tolerance of the operating frequency | 5 % |
| relative positive tolerance of the operating frequency | 5 % |
| relative negative tolerance of the operating frequency | 5 % |
| operational current at AC at 400 V rated value | 1 A |
| ampacity when starting maximum | 10 A |
| operating power for 3-phase motors at 400 V at 50 Hz | 0.09 ... 0.25 kW |
| Inputs/ Outputs | |
| number of digital inputs | 4 |
| <ul style="list-style-type: none"> note | 4 via 3DI/LC module |
| address space memory of address range | |
| <ul style="list-style-type: none"> of the inputs of the outputs | 4 byte 2 byte |
| Supply voltage | |
| type of voltage of the supply voltage | DC |
| supply voltage 1 at DC rated value | |
| <ul style="list-style-type: none"> minimum permissible maximum permissible | 20.4 V 28.8 V |
| supply voltage at DC rated value | 24 V |
| consumed current for rated value of supply voltage | |
| <ul style="list-style-type: none"> in standby mode of operation during operation at switching on of motor | 50 mA 50 mA 140 mA |

| | |
|---|--|
| power loss [W] for rated value of supply voltage | |
| • in switching state OFF with bypass circuit | 1.2 W |
| • in switching state ON with bypass circuit | 3.4 W |
| inrush current peak at 24 V | 25 A; Observe the manual for group configuration |
| duration of inrush current peak at 24 V | 0.14 ms |
| Response times | |
| ON-delay time | 20 ms |
| OFF-delay time | 35 ... 50 ms |
| Power Electronics | |
| operational current | |
| • at 40 °C rated value | 1 A |
| • at 50 °C rated value | 1 A |
| • at 55 °C rated value | 1 A |
| • at 60 °C rated value | 1 A |
| Installation/ mounting/ dimensions | |
| mounting position | Vertical, horizontal (observe derating) |
| fastening method | pluggable in BaseUnit |
| height | 142 mm |
| width | 30 mm |
| depth | 150 mm |
| required spacing with side-by-side mounting | |
| • upwards | 50 mm |
| • downwards | 50 mm |
| Ambient conditions | |
| installation altitude at height above sea level maximum | 4 000 m; For derating see manual |
| ambient temperature | |
| • during operation | -25 ... +60 °C; For derating see manual |
| • during storage | -40 ... +70 °C |
| • during transport | -40 ... +70 °C |
| environmental category during operation according to IEC 60721 | 3K6 (no formation of ice, no condensation), 3C3 (no salt mist), 3S2 (sand must not get into the devices) |
| relative humidity during operation | 10 ... 95 % |
| air pressure according to SN 31205 | 900 ... 1 060 hPa |
| Communication/ Protocol | |
| protocol is supported | |
| • PROFIBUS DP protocol | Yes |
| • PROFINET protocol | Yes |
| product function bus communication | Yes |
| protocol is supported AS-Interface protocol | No |
| product function | |
| • supports PROFenergy measured values | Yes |
| • supports PROFenergy shutdown | Yes |
| type of electrical connection of the communication interface | Plug contact to Base Unit |
| Connections/ Terminals | |
| type of electrical connection | |
| • 1 for digital input signals | Pluggable module - accessory |
| type of electrical connection | |
| • for main energy infeed | Plug contact to Base Unit |
| • for load-side outgoing feeder | Plug contact to Base Unit |
| • for supply voltage line-side | Plug contact to Base Unit |
| wire length for motor unshielded maximum | 200 m |
| UL/CSA ratings | |
| full-load current (FLA) for 3-phase AC motor at 480 V rated value | 1 A |
| current with locked rotor (LRA) for 3-phase AC motor at 480 V rated value | 8 A |
| operating voltage at AC at 60 Hz according to CSA and UL rated value | 480 V |
| Approvals Certificates | |
| General Product Approval | EMV |



EMV Test Certificates Maritime application

[KC](#)

[Type Test Certificates/Test Report](#)



other Dangerous goods Environment Industrial Communication



[Confirmation](#)

[Transport Information](#)

[Environmental Confirmations](#)



Further information

Information on the packaging

<https://support.industry.siemens.com/cs/ww/en/view/109813875>

Information for data generation and storage

<https://support.industry.siemens.com/cs/ww/en/view/109995012>

Information- and Downloadcenter (Catalogs, Brochures,...)

<https://www.siemens.com/ic10>

Industry Mall (Online ordering system)

<https://mall.industry.siemens.com/mall/en/en/Catalog/product?mlfb=3RK1308-0BB00-0CP0>

Cax online generator

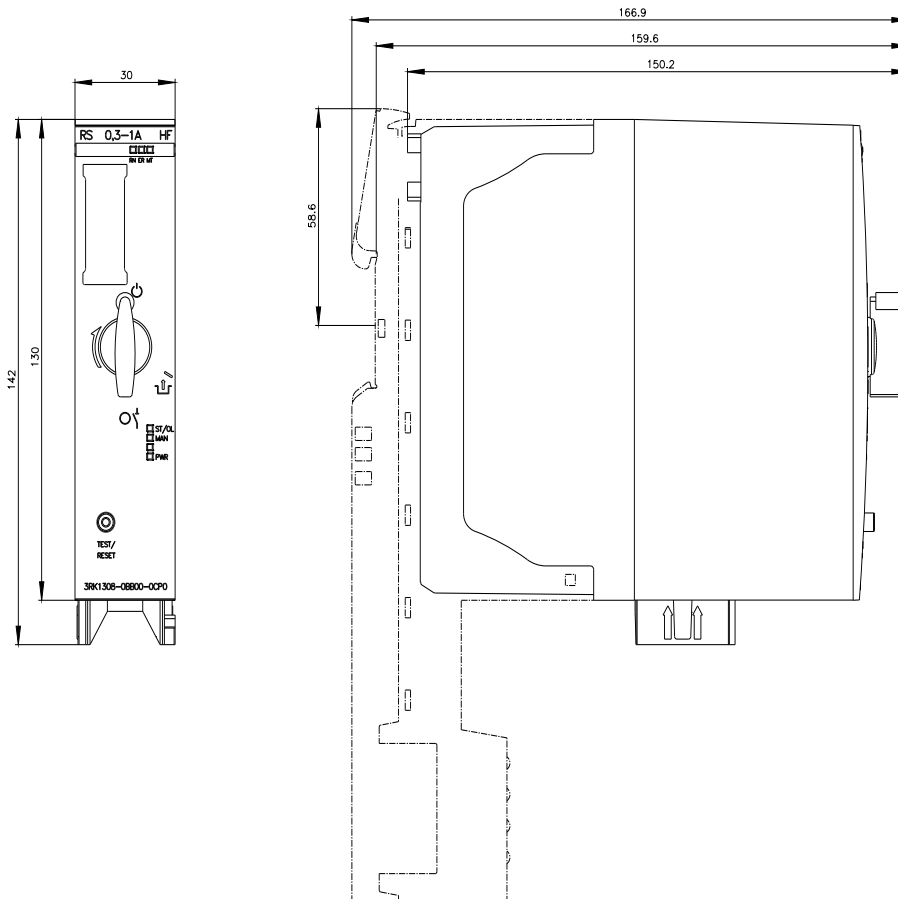
<https://support.automation.siemens.com/WW/CAXorder/default.aspx?lang=en&mlfb=3RK1308-0BB00-0CP0>

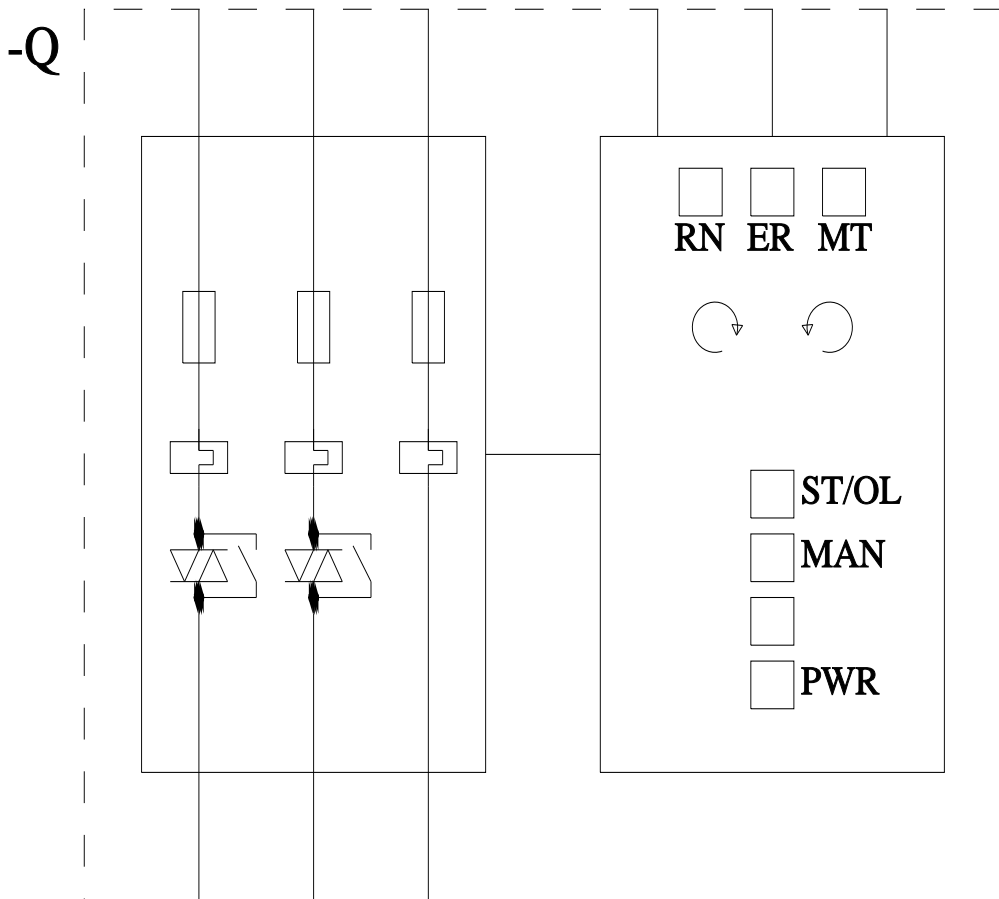
Service&Support (Manuals, Certificates, Characteristics, FAQs,...)

<https://support.industry.siemens.com/cs/ww/en/ps/3RK1308-0BB00-0CP0>

Image database (product images, 2D dimension drawings, 3D models, device circuit diagrams, EPLAN macros, ...)

https://www.automation.siemens.com/bilddb/cax_de.aspx?mlfb=3RK1308-0BB00-0CP0&lang=en





last modified:

4/2/2025