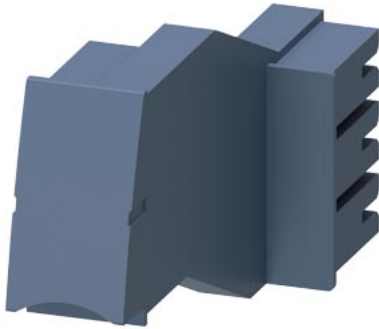


Extension connector for infeed system 3RV19, 3RV29



General technical data		
product brand name		SIRIUS
product designation		Expansion connector for 3RV19 / 3RV29
degree of pollution		3
installation altitude at height above sea level maximum	m	2 000
ambient temperature		
• during transport	°C	-55 ... +80
• during storage	°C	-55 ... +80
• during operation	°C	-20 ... +60
vibration resistance		f = 4 to 5.8 Hz; d = 15 mm; f = 5.8 to 500 Hz; a = 2 m / s ² 10 cycles
shock resistance		Semi-sinusoidal a = 6 m/s ² at 10 ms; 3 pos. and 3 neg. Shock in all axes
reference code		
• according to IEC 81346-2		X
• according to EN 61346-2		X
Main circuit		
operational current at AC at 400 V rated value	A	63
Installation/ mounting/ dimensions		
fastening method		plug-in fixing
width	mm	40
height	mm	55
depth	mm	100
Certificates/ approvals		
General Product Approval	EMV	Test Certificates



EG-Konf.



UL



RCM

[Type Test Certificates/Test Report](#)

Maritime application other

Environment



DNV



[Confirmation](#)

[Environmental Confirmations](#)

Further information

Information on the packaging

<https://support.industry.siemens.com/cs/ww/en/view/109813875>

Information for data generation and storage

<https://support.industry.siemens.com/cs/ww/en/view/109995012>

Information- and Downloadcenter (Catalogs, Brochures,...)

<https://www.siemens.com/ic10>

Industry Mall (Online ordering system)

<https://mall.industry.siemens.com/mall/en/en/Catalog/product?mlfb=3RA6890-1AA>

Cax online generator

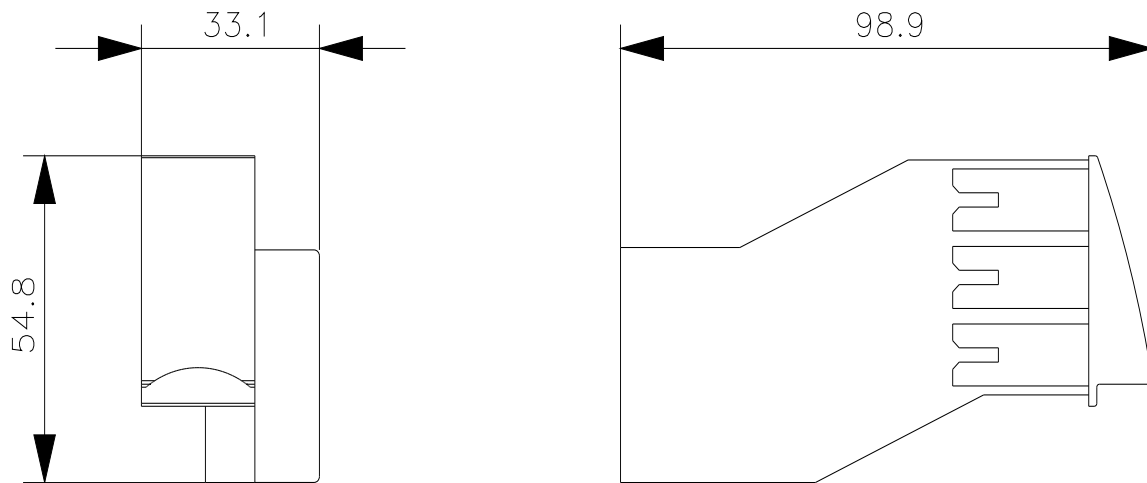
<https://support.automation.siemens.com/WW/CAXorder/default.aspx?lang=en&mlfb=3RA6890-1AA>

Service&Support (Manuals, Certificates, Characteristics, FAQs,...)

<https://support.industry.siemens.com/cs/ww/en/ps/3RA6890-1AA>

Image database (product images, 2D dimension drawings, 3D models, device circuit diagrams, EPLAN macros, ...)

https://www.automation.siemens.com/bilddb/cax_de.aspx?mlfb=3RA6890-1AA&lang=en



last modified:

4/2/2025 