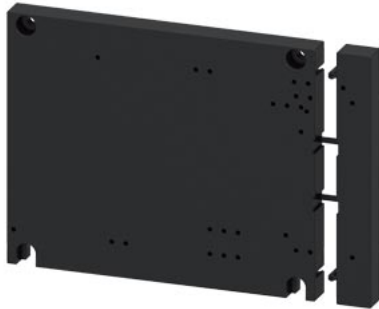


base plate for mounting assemblies of three contactors (3x3RT2.4 or 2x3RT2.4 and 1x3RT2.3) for star-delta (wye-delta) starting



product brand name	SIRIUS
product category	Base plates
product designation	Base plate
product type designation	3RA29

General technical data	
Substance Prohibittance (Date)	07/01/2006
Weight	0.276 kg

Approvals Certificates		
General Product Approval	Test Certificates	Maritime application



[Type Test Certificates/Test Report](#)



Maritime application	other
----------------------	-------



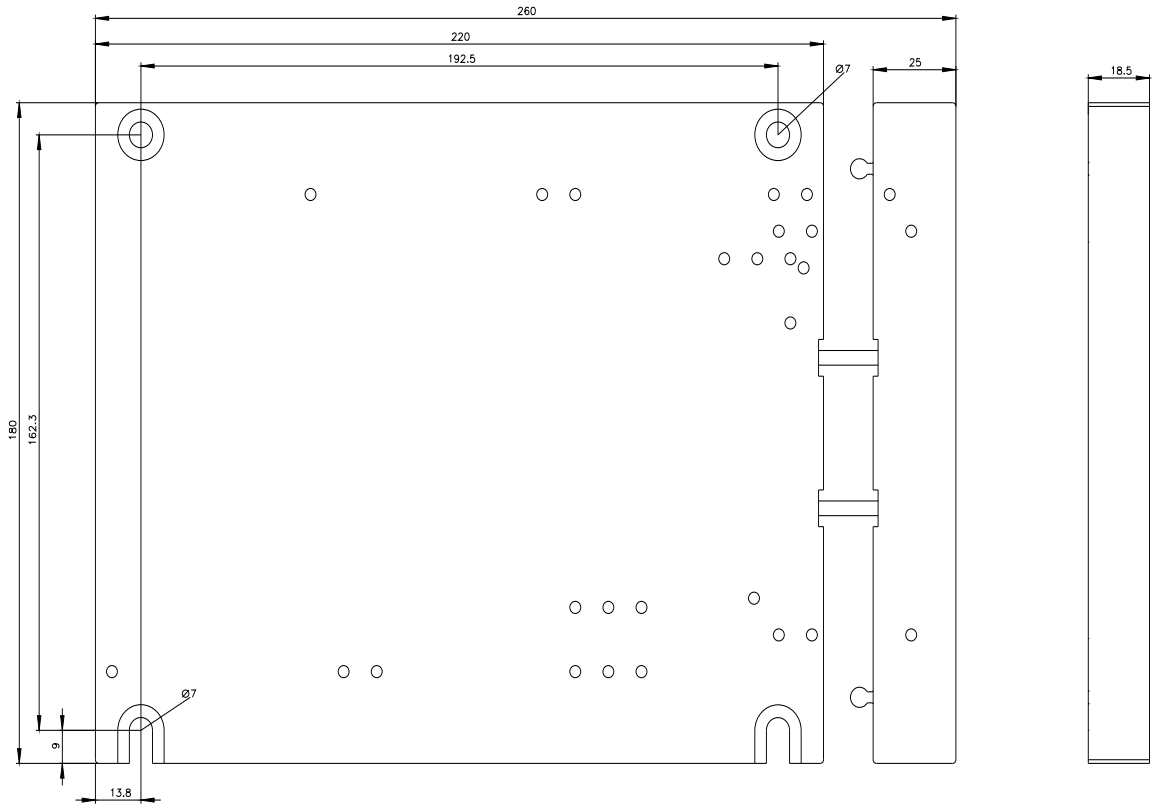
[Confirmation](#)

Environment
-------------

[Environmental Confirmations](#)

Further information
---------------------

- Information on the packaging  
<https://support.industry.siemens.com/cs/ww/en/view/109813875>
- Information for data generation and storage  
<https://support.industry.siemens.com/cs/ww/en/view/109995012>
- Information- and Downloadcenter (Catalogs, Brochures,...)  
<https://www.siemens.com/ic10>
- Industry Mall (Online ordering system)  
<https://mall.industry.siemens.com/mall/en/en/Catalog/product?mlfb=3RA2942-2F>
- Cax online generator  
<https://support.automation.siemens.com/WW/CAXorder/default.aspx?lang=en&mlfb=3RA2942-2F>
- Service&Support (Manuals, Certificates, Characteristics, FAQs,...)  
<https://support.industry.siemens.com/cs/ww/en/ps/3RA2942-2F>
- Image database (product images, 2D dimension drawings, 3D models, device circuit diagrams, EPLAN macros, ...)



last modified:

10/22/2025 