



busbar adapter Size S3 for mechanical mounting of circuit breaker and contactor
Can be snapped onto standard mounting rail or for screw mounting (individual unit packaging)

product brand name	SIRIUS
product category	DIN-rail adapter
product designation	DIN rail adapter
product type designation	3RA29

General technical data	
material	plastic
certificate of suitability	CE / UL / CSA
size of the circuit-breaker	S3
size of contactor	S3
Substance Prohibittance (Date)	07/01/2006
Weight	0.25 kg

Installation/ mounting/ dimensions	
fastening method	screw and snap-on mounting onto 35 mm DIN rail
height	332.5 mm
width	70 mm
depth	23.3 mm

Approvals Certificates		
General Product Approval	Test Certificates	Maritime application



[Special Test Certificate](#)



Maritime application					
----------------------	--	--	--	--	--



other	Railway	Environment
-------	---------	-------------



[Confirmation](#)

[Special Test Certificate](#)

[Environmental Confirmations](#)

Further information

[Information on the packaging](#)

<https://support.industry.siemens.com/cs/ww/en/view/109813875>

Information for data generation and storage

<https://support.industry.siemens.com/cs/ww/en/view/109995012>

Information- and Downloadcenter (Catalogs, Brochures,...)

<https://www.siemens.com/ic10>

Industry Mall (Online ordering system)

<https://mall.industry.siemens.com/mall/en/en/Catalog/product?mlfb=3RA2942-1AA00>

Cax online generator

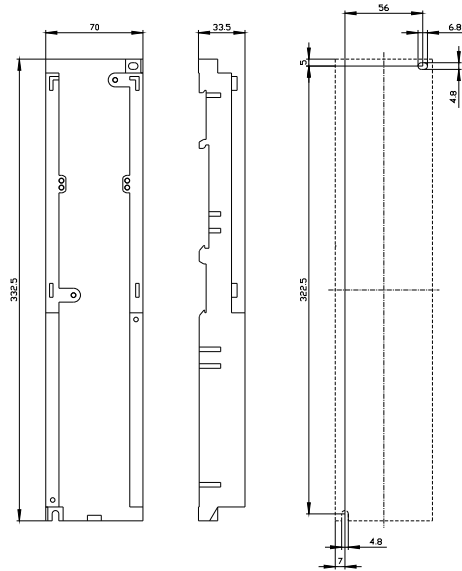
<https://support.automation.siemens.com/WW/CAXorder/default.aspx?lang=en&mlfb=3RA2942-1AA00>

Service&Support (Manuals, Certificates, Characteristics, FAQs,...)

<https://support.industry.siemens.com/cs/ww/en/ps/3RA2942-1AA00>

Image database (product images, 2D dimension drawings, 3D models, device circuit diagrams, EPLAN macros, ...)

https://www.automation.siemens.com/bilddb/cax_de.aspx?mlfb=3RA2942-1AA00&lang=en



last modified:

10/22/2025