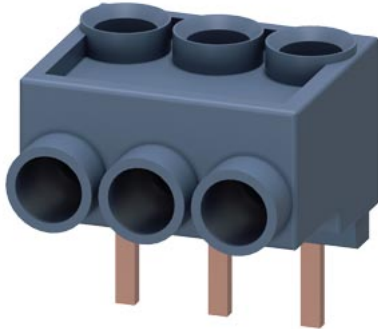


3-phase feed-in terminal, for contactors 3RT201



<b>product brand name</b>	SIRIUS
<b>product category</b>	Terminals
<b>product designation</b>	3-phase infeed terminals
<b>product type designation</b>	3RA29
<b>General technical data</b>	
<b>certificate of suitability</b>	CE / UL / CSA / CCC
<b>size of contactor</b>	S00
insulation voltage with degree of pollution 3 at AC rated value	690 V
<b>Substance Prohibitance (Date)</b>	10/01/2009
<b>Weight</b>	0.023 kg
<b>ampacity maximum</b>	22 A
<b>Ambient conditions</b>	
<b>ambient temperature</b>	
• during operation	-40 ... +60 °C
• during storage	-50 ... +80 °C
<b>Installation/ mounting/ dimensions</b>	
<b>height</b>	30.4 mm
<b>width</b>	25.9 mm
<b>depth</b>	28.4 mm
<b>Connections/ Terminals</b>	
<b>type of electrical connection</b>	
• for main current circuit	screw-type terminals with box terminals
<b>type of connectable conductor cross-sections</b>	
• for main contacts	
— solid	1x (2.5 ... 6.0 mm <sup>2</sup> )
— stranded	1x (2.5 ... 6.0 mm <sup>2</sup> )
— finely stranded with core end processing	1x (2.5 ... 10.0 mm <sup>2</sup> )
• for AWG cables for main contacts	1x (12 ... 8)
<b>connectable conductor cross-section for main contacts</b>	
• solid or stranded	2.5 ... 6 mm <sup>2</sup>
• stranded	2.5 ... 6 mm <sup>2</sup>
• finely stranded with core end processing	2.5 ... 10 mm <sup>2</sup>
<b>AWG number as coded connectable conductor cross section for main contacts</b>	12 ... 8
<b>Approvals Certificates</b>	
<b>General Product Approval</b>	<b>Test Certificates</b>



[Special Test Certificate](#)

[Type Test Certificates/Test Report](#)

Maritime application



other

Railway

Environment



[Confirmation](#)

[Special Test Certificate](#)

[Environmental Confirmations](#)

Further information

Information on the packaging

<https://support.industry.siemens.com/cs/ww/en/view/109813875>

Information for data generation and storage

<https://support.industry.siemens.com/cs/ww/en/view/109995012>

Information- and Downloadcenter (Catalogs, Brochures,...)

<https://www.siemens.com/ic10>

Industry Mall (Online ordering system)

<https://mall.industry.siemens.com/mall/en/en/Catalog/product?mlfb=3RA2913-3K>

Cax online generator

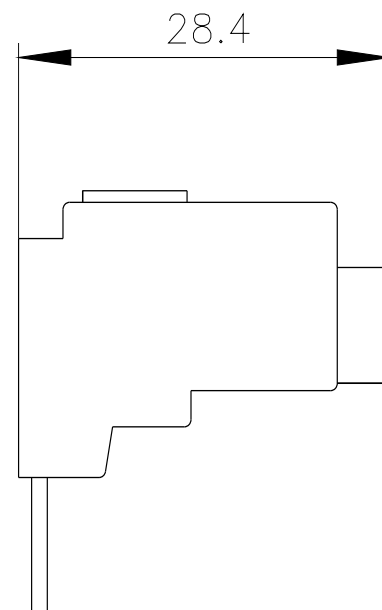
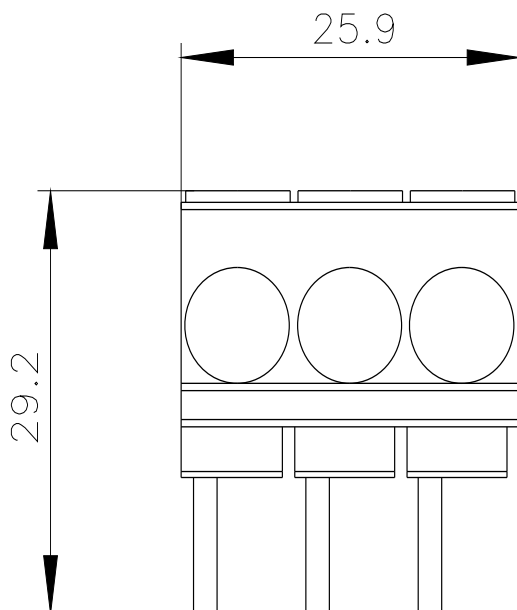
<https://support.automation.siemens.com/WW/CAXorder/default.aspx?lang=en&mlfb=3RA2913-3K>

Service&Support (Manuals, Certificates, Characteristics, FAQs,...)

<https://support.industry.siemens.com/cs/ww/en/ps/3RA2913-3K>

Image database (product images, 2D dimension drawings, 3D models, device circuit diagrams, EPLAN macros, ...)

[https://www.automation.siemens.com/bilddb/cax\\_de.aspx?mlfb=3RA2913-3K&lang=en](https://www.automation.siemens.com/bilddb/cax_de.aspx?mlfb=3RA2913-3K&lang=en)



---

last modified:

4/2/2025 