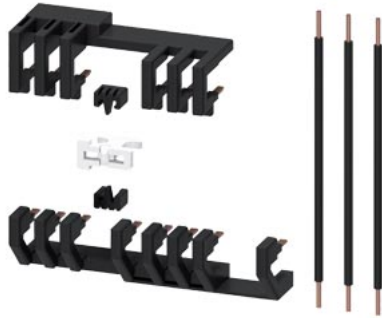


reversing starter kit for 3RC7 ILM for DIN-rail mounting, mounting on 60 mm busbar system or 3RV29 infeed system



product brand name	SIRIUS
product designation	Reversing starter mounting kit for 3RC7
design of the product	for DIN-rail mounting, mounting on 60 mm busbar system or 3RV29 infeed system
product type designation	3RA29

General technical data	
Substance Prohibitation (Date)	10/01/2023
Weight	0.07 kg

Approvals Certificates		
General Product Approval	Test Certificates	other



[Type Test Certificates/Test Report](#)

[Confirmation](#)

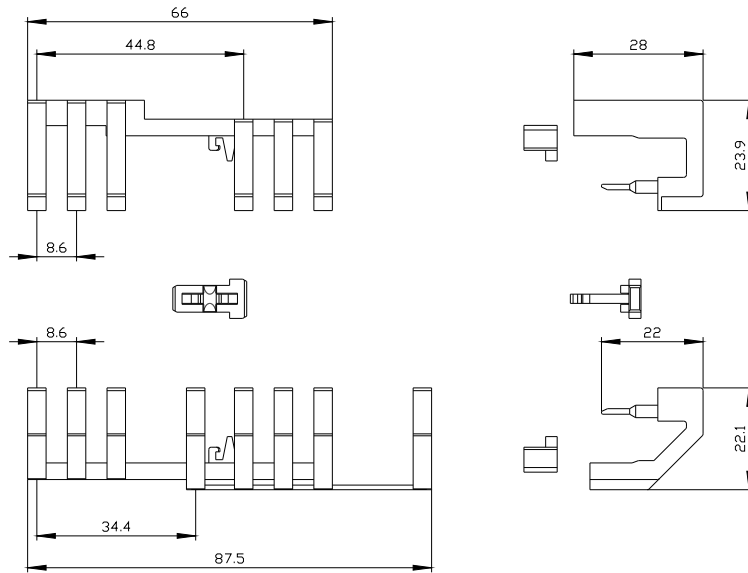


### Environment

[Environmental Conformations](#)

### Further information

- Information on the packaging  
<https://support.industry.siemens.com/cs/ww/en/view/109813875>
- Information for data generation and storage  
<https://support.industry.siemens.com/cs/ww/en/view/109995012>
- Information- and Downloadcenter (Catalogs, Brochures,...)  
<https://www.siemens.com/ic10>
- Industry Mall (Online ordering system)  
<https://mall.industry.siemens.com/mall/en/en/Catalog/product?mlfb=3RA2913-2LA2>
- Cax online generator  
<https://support.automation.siemens.com/WW/CAXorder/default.aspx?lang=en&mlfb=3RA2913-2LA2>
- Service&Support (Manuals, Certificates, Characteristics, FAQs,...)  
<https://support.industry.siemens.com/cs/ww/en/ps/3RA2913-2LA2>
- Image database (product images, 2D dimension drawings, 3D models, device circuit diagrams, EPLAN macros, ...)  
[https://www.automation.siemens.com/bilddb/cax\\_de.aspx?mlfb=3RA2913-2LA2&lang=en](https://www.automation.siemens.com/bilddb/cax_de.aspx?mlfb=3RA2913-2LA2&lang=en)



last modified:

6/12/2025 