



SENTRON, Fuse switch disconnecter 3NP1, 3-pole, NH2, 400 A, for assembly and installation on mounting plate, flat terminal, cover level 70 mm

| Model  |   |
|--|---|
| product designation                                | Fuse switch disconnecter                        |
| design of the safety monitoring                    | Without   |
| design of the load switch strip form               | No  |
| type of the driving mechanism motor drive          | No  |
| General technical data                             |   |
| number of poles                                    | 3   |
| type of device                                     | For assembly and installation on mounting plate |
| size of disconnecting link                         | 2 and 1   |
| size of fuse link                                  | NH1, NH2  |
| let-through current with closed switch maximum     | 40 kA   |
| mechanical service life (operating cycles) typical | 1 000   |
| I <sup>2</sup> t value with closed switch maximum  | 2 150 kA <sup>2</sup> .s                        |
| power factor                                       |   |
| • at AC-22 B                                       | 0.65  |
| • at AC-23 B                                       | 0.35  |
| • with capacitive load                             | -0.25   |
| fuse system  | LV HRC fuse                                     |
| degree of pollution                                | 3   |
| Voltage  |   |
| insulation voltage                                 |   |
| • rated value                                      | 690 V   |
| • with degree of pollution 3 at AC rated value     | 690 V   |
| • with degree of pollution 2 at AC rated value     | 1 000 V   |
| power factor at AC-21 B                            | 0.95  |
| surge voltage resistance rated value               | 8 kV  |
| • operational current                              |   |
| — at 35 °C rated value                             | 400 A   |
| — at 40 °C rated value                             | 400 A   |
| — at 45 °C rated value                             | 392 A   |
| — at 50 °C rated value                             | 372 A   |
| — at 55 °C rated value                             | 356 A   |
| • operational current                              |   |
| — at AC-21 B at 240 V rated value                  | 400 A   |
| — at AC-21 B at 400 V rated value                  | 400 A   |
| — at AC-21 B at 500 V rated value                  | 400 A   |
| — at AC-21 B at 690 V rated value                  | 400 A   |
| — at AC-22 B at 240 V rated value                  | 400 A   |
| — at AC-22 B at 400 V rated value                  | 400 A   |

|   |       |
|---|-------|
| — at AC-22 B at 500 V rated value   | 400 A |
| — at AC-22 B at 690 V rated value   | 400 A |
| — at AC-23 B at 690 V rated value   | 125 A |
| — at AC-23 B at 500 V rated value   | 315 A |
| — at AC-23 B at 400 V rated value   | 400 A |
| — at AC-23 B at 240 V rated value   | 400 A |
| — at DC-21 B at 120 V rated value   | 400 A |
| — at DC-21 B at 240 V rated value   | 400 A |
| — at DC-21 B at 440 V rated value   | 400 A |
| — at DC-22 B at 120 V rated value   | 400 A |
| — at DC-22 B at 240 V rated value   | 400 A |
| — at DC-22 B at 440 V rated value   | 315 A |
| — at DC-23 B at 120 V rated value   | 250 A |
| — at DC-23 B at 240 V rated value   | 250 A |
| — at DC-23 B at 440 V rated value   | 160 A |
| <b>let-through current with high-speed activation maximum permissible</b> | 40 kA |
| <b>operating voltage</b>  |       |
| • at AC rated value maximum   | 690 V |
| • at DC rated value   | 440 V |
| • at DC rated value maximum   | 440 V |
| <b>Protection class</b>   |       |
| <b>protection class IP</b>  |       |
| • with closed switch with cover or cable lug cover                        | IP40  |
| • with closed switch without cover or cable lug cover                     | IP30  |
| • open  | IP20  |
| <b>Dissipation</b>  |       |
| <b>power loss [W]</b>   |       |
| • with conventional rated thermal current without fuse per pole           | 14 W  |
| • with conventional rated thermal current without fuse per device         | 42 W  |
| • for rated value of the current at AC in hot operating state per pole    | 48 W  |
| • of the fuse per fuse maximum  | 34 W  |
| <b>Main circuit</b>   |       |
| <b>operational current</b>  |       |
| • rated value   | 400 A |
| • with capacitive load at 400 V rated value                               | 72 A  |
| • with capacitive load at 500 V rated value                               | 55 A  |
| <b>Auxiliary circuit</b>  |       |
| number of CO contacts for auxiliary contacts                              | 0     |
| <b>number of NC contacts for auxiliary contacts</b>                       | 0     |
| <b>number of NO contacts for auxiliary contacts</b>                       | 0     |
| <b>Suitability</b>  |       |
| <b>suitability for use main switch</b>                                    | No    |
| <b>suitability for use switch disconnecter</b>                            | Yes   |
| <b>suitability for use EMERGENCY OFF switch</b>                           | No    |
| <b>suitability for use safety switch</b>                                  | Yes   |
| <b>suitability for use maintenance/repair switch</b>                      | Yes   |
| <b>Product details</b>  |       |
| <b>product function phase failure monitoring</b>                          | No    |
| <b>product component</b>  |       |
| • undervoltage release  | No    |
| • undervoltage release with leading contact                               | No    |
| <b>product feature sealable</b>   | Yes   |
| <b>product extension auxiliary switch</b>                                 | Yes   |
| <b>product extension optional locking capability</b>                      | Yes   |
| <b>product extension optional phase failure monitoring</b>                | Yes   |
| <b>product extension optional fuse monitoring</b>                         | Yes   |
| <b>product extension optional voltage trigger</b>                         | No    |
| <b>product extension optional overvoltage protection</b>                  | Yes   |

|  |  |
|--|--|
| <b>monitoring</b>  |  |
| <b>Product function</b>  |  |
| product function overvoltage protection monitoring   | No   |
| <b>Short circuit</b>   |  |
| <b>conditional short-circuit current (I<sub>q</sub>)</b>   |  |
| <ul style="list-style-type: none"> <li>at AC at 240 V with high-speed activation rated value</li> <li>at AC at 500 V with high-speed activation rated value</li> <li>at AC at 690 V with high-speed activation rated value</li> <li>with closed switch at AC at 240 V rated value</li> <li>with closed switch at AC at 500 V rated value</li> <li>with closed switch at AC at 690 V rated value</li> </ul> | <ul style="list-style-type: none"> <li>80 kA</li> <li>80 kA</li> <li>50 kA</li> <li>100 kA</li> <li>100 kA</li> <li>100 kA</li> </ul>                  |
| <b>Connections</b>   |  |
| arrangement of electrical connectors for main current circuit  | other  |
| <b>connectable conductor cross-section for main contacts</b>   |  |
| <ul style="list-style-type: none"> <li>solid or stranded minimum</li> <li>solid or stranded maximum</li> <li>stranded minimum</li> <li>stranded maximum</li> </ul>   | <ul style="list-style-type: none"> <li>25 mm<sup>2</sup></li> <li>240 mm<sup>2</sup></li> <li>25 mm<sup>2</sup></li> <li>240 mm<sup>2</sup></li> </ul> |
| <b>tightening torque with screw-type terminals</b>   |  |
| <ul style="list-style-type: none"> <li>minimum</li> <li>maximum</li> </ul>   | <ul style="list-style-type: none"> <li>10 N·m</li> <li>12 N·m</li> </ul>   |
| type of connectable conductor cross-sections of the laminated conductors maximum   | 34 x 18 mm   |
| <b>type of connection technology</b>   | Flat terminal  |
| <b>Mechanical Design</b>   |  |
| <b>height</b>  | 306 mm   |
| <b>width</b>   | 209.4 mm   |
| <b>depth</b>   | 130 mm   |
| <b>fastening method</b>  | mounting plate   |
| <b>fastening method</b>  |  |
| <ul style="list-style-type: none"> <li>floor mounting</li> <li>rail mounting</li> </ul>  | <ul style="list-style-type: none"> <li>Yes</li> <li>No</li> </ul>  |
| <b>mounting position</b>   | horizontal/vertical  |
| <b>Net Weight</b>  | 3.725 kg   |
| <b>Environmental conditions</b>  |  |
| <b>ambient temperature during operation</b>  |  |
| <ul style="list-style-type: none"> <li>minimum</li> <li>maximum</li> </ul>   | <ul style="list-style-type: none"> <li>-25 °C</li> <li>55 °C</li> </ul>  |
| <b>ambient temperature during storage</b>  |  |
| <ul style="list-style-type: none"> <li>minimum</li> <li>maximum</li> </ul>   | <ul style="list-style-type: none"> <li>-50 °C</li> <li>80 °C</li> </ul>  |
| <b>Certificates</b>  |  |
| <b>reference code according to IEC 81346-2</b>   | Q  |
| <b>Approvals Certificates</b>  |  |
| <b>General Product Approval</b>  |  |



[Miscellaneous](#)

|                          |                   |                      |       |
|--------------------------|-------------------|----------------------|-------|
| General Product Approval | Test Certificates | Maritime application | other |
|--------------------------|-------------------|----------------------|-------|



[Type Test Certificates/Test Report](#)

[Special Test Certificate](#)



|       |             |
|-------|-------------|
| other | Environment |
|-------|-------------|

**Further information**

**Information on the packaging**

<https://support.industry.siemens.com/cs/ww/en/view/109813875>

**Information for data generation and storage**

<https://support.industry.siemens.com/cs/ww/en/view/109995012>

**Information- and Downloadcenter (Catalogs, Brochures,...)**

<http://www.siemens.com/lowvoltage/catalogs>

**Industry Mall (Online ordering system)**

<https://mall.industry.siemens.com/mall/en/en/Catalog/product?mlfb=3NP1153-1DA10>

**Service&Support (Manuals, Certificates, Characteristics, FAQs,...)**

<https://support.industry.siemens.com/cs/ww/en/ps/3NP1153-1DA10>

**Image database (product images, 2D dimension drawings, 3D models, device circuit diagrams, ...)**

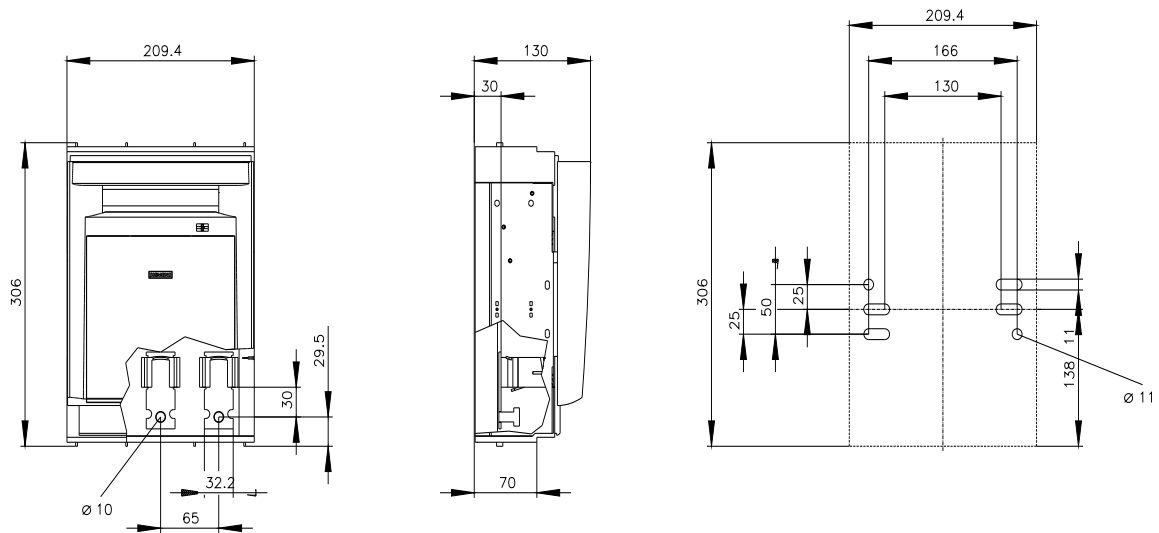
[http://www.automation.siemens.com/bilddb/cax\\_en.aspx?mlfb=3NP1153-1DA10](http://www.automation.siemens.com/bilddb/cax_en.aspx?mlfb=3NP1153-1DA10)

**CAX-Online-Generator**

<http://www.siemens.com/cax>

**Tender specifications**

<http://www.siemens.com/specifications>





# CB



last modified:

4/4/2025 

