



SITOR fuse link, with slotted blade contacts, NH2, In: 80 A, aR, Un AC: 1500 V, Un DC: 1000 V, without Indicator

Figure similar

Model		
product brand name	SENTRON	
product designation	SITOR fuse link	
design of the product	With slotted blade contacts	
design of an identification indicator	Without indicator	
design of the switching contact	with slotted knife blade contacts for screw mounting. mounting dimensions: 170 mm	
design of the fuse link	SITOR, LV HRC design	
General technical data		
size of fuse system according to EN 60269-1	NH2	
operating class of the fuse link	aR	
type of voltage of the operating voltage	AC/DC	
Supply voltage		
supply voltage		
• at AC	1 500 V	
• at DC	1 000 V	
Breaking Capacity		
switching capacity current		
• at DC according to IEC 60947-2 rated value	45 kA	
• according to IEC 60947-2 rated value	30 kA	
Dissipation		
power loss [W]	42 W	
power loss [W]		
• for rated value of the current at AC in hot operating state per pole	42 W	
• maximum	42 W	
Product details		
product description	with bolt-on links, silver-plated	
accessories included	no	
Mechanical Design		
mounting position	Any, preferably vertical	
Net Weight	1.369 kg	
Environmental conditions		
ambient temperature during operation		
• minimum	-20 °C	
• maximum	50 °C	
environmental category	-20 to +50 at 95% relative humidity	
Approvals Certificates		
General Product Approval	other	Environment



[Confirmation](#)

[Environmental Con-
firmations](#)

Environment

[Environmental Con-
firmations](#)

Further information

Information on the packaging

<https://support.industry.siemens.com/cs/ww/en/view/109813875>

Information for data generation and storage

<https://support.industry.siemens.com/cs/ww/en/view/109995012>

Information- and Downloadcenter (Catalogs, Brochures,...)

<http://www.siemens.com/lowvoltage/catalogs>

Industry Mall (Online ordering system)

<https://mall.industry.siemens.com/mall/en/en/Catalog/product?mlfb=3NE5320-0MK06>

Service&Support (Manuals, Certificates, Characteristics, FAQs,...)

<https://support.industry.siemens.com/cs/ww/en/ps/3NE5320-0MK06>

Image database (product images, 2D dimension drawings, 3D models, device circuit diagrams, ...)

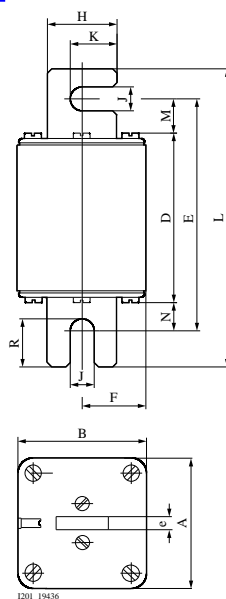
http://www.automation.siemens.com/bilddb/cax_en.aspx?mlfb=3NE5320-0MK06

CAX-Online-Generator

<http://www.siemens.com/cax>

Tender specifications

<http://www.siemens.com/specifications>



1201_19436

Type	Dimensions												
	A	B	D	E	F	H	J	K	L	M	N	R	e
3NE32..-0MK	52	52	78,4	106,6	26	25	11	18	137	15,7	12,5	22,3	6
3NE32..-0MK08	52	52	78,4	106,6	26	25	11	18	137	15,7	12,5	22,3	6
3NE53..-0MK06	60	60	137	165,5	30	32	11	21,5	196	15,8	12,8	22,1	6

last modified:

5/24/2025

