



Door-coupling rotary operating mechanism, actuating lever black, defeatable, 66x66 mm, lockable in 0-position, for four-hole front mounting, with coupling part, with shaft 300 mm long, 6x6 mm. Accessory for switch disconnecter 3LD3

Model	
product designation	Door mounted rotary operator
design of the product	accessories for 3LD3 switch disconnectors
degree of protection NEMA rating	other
color of the actuating element	black
product feature interlock	No
special product feature	defeatable knob-operated mechanism
product feature can be locked into OFF position	Yes
length of the extension shaft	300 mm
Net Weight	272 g

Approvals Certificates		
General Product Approval	other	Environment



[Confirmation](#)

[Environmental Confirmations](#)

## Environment

[Environmental Confirmations](#)

## Further information

Information on the packaging

<https://support.industry.siemens.com/cs/ww/en/view/109813875>

Information for data generation and storage

<https://support.industry.siemens.com/cs/ww/en/view/109995012>

Information- and Downloadcenter (Catalogs, Brochures,...)

<https://www.siemens.com/lowvoltage/catalogs>

Industry Mall (Online ordering system)

<https://mall.industry.siemens.com/mall/en/en/Catalog/product?mlfb=3LD9343-2CA>

Service&Support (Manuals, Certificates, Characteristics, FAQs,...)

<https://support.industry.siemens.com/cs/ww/en/ps/3LD9343-2CA>

Image database (product images, 2D dimension drawings, 3D models, device circuit diagrams, ...)

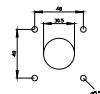
[https://www.automation.siemens.com/bilddb/cax\\_en.aspx?mlfb=3LD9343-2CA](https://www.automation.siemens.com/bilddb/cax_en.aspx?mlfb=3LD9343-2CA)

CAX-Online-Generator

<https://www.siemens.com/cax>

Tender specifications

<https://www.siemens.com/specifications>



---

last modified:

5/26/2025 

