



Load disconnecter 3LD3, Iu 40 A Main switch 3-pole Rated operating capacity at AC-23 A at 400 V 18.5 kW Installation in distribution boards, Basic switch without Knob-operated mechanism

Model	
product brand name	SENTRON
product designation	Switch disconnecter
design of the product	Switch
display version for switch position indicator manual operation	1 ON - 0 OFF
type of switch	DIN-rail mounting
design of the actuating element	Without handle
design of handle	without
General technical data	
number of poles	3
number of poles note	3
mechanical service life (operating cycles) typical	100 000
electrical endurance (operating cycles)	
• at AC-23 A at 690 V	6 000
operating frequency maximum	50 1/h
degree of pollution	3
Voltage	
insulation voltage rated value	690 V
surge voltage resistance rated value	6 kV
operating voltage	
• at AC rated value	690 V
operating frequency rated value	
• minimum	50 Hz
• maximum	60 Hz
Protection class	
protection class IP	IP20
protection class IP on the front	IP20
Dissipation	
power loss [W] for rated value of the current at AC in hot operating state per pole	2.5 W
Main circuit	
operational current	
• at AC-21 at 690 V rated value	40 A
• at AC-21 A at 240 V rated value	40 A
• at AC-21 A at 400 V rated value	40 A
• at AC-21 A at 440 V rated value	40 A
• at AC-23 A at 400 V rated value	36 A
operating power	
• at AC-23 A at 240 V rated value	7.5 kW

• at AC-23 A at 400 V rated value	19 kW
• at AC-23 A at 440 V rated value	15 kW
• at AC-23 A at 690 V rated value	15 kW
• at AC-3 at 240 V rated value	7.5 kW
• at AC-3 at 400 V rated value	12 kW
• at AC-3 at 690 V rated value	11.5 kW

#### Auxiliary circuit

number of CO contacts for auxiliary contacts	0
<b>number of NC contacts for auxiliary contacts</b>	0
<b>number of NO contacts for auxiliary contacts</b>	0
<b>operating voltage of auxiliary contacts at AC maximum</b>	500 V
<b>continuous current of the auxiliary contact rated value</b>	10 A
insulation voltage of the auxiliary switch rated value	500 V

#### Suitability

<b>suitability for use main switch</b>	Yes
<b>suitability for use switch disconnector</b>	Yes
<b>suitability for use EMERGENCY OFF switch</b>	Yes
<b>suitability for use safety switch</b>	Yes
<b>suitability for use maintenance/repair switch</b>	Yes

#### Product details

<b>special product feature</b>	Basic Switch
<b>product feature can be locked into OFF position</b>	No

#### Accessories

<b>product extension optional</b>	
• motor drive	No
• voltage trigger	No
<b>number of connectable NC contacts for auxiliary contacts attachable maximum</b>	2
<b>number of connectable NO contacts for auxiliary contacts attachable maximum</b>	4
<b>number of connectable CO contacts for auxiliary contacts attachable maximum</b>	0

#### Short circuit

<b>conditional short-circuit current with line-side fuse protection</b>	
• at 440 V by gG fuse rated value	10 kA
• at 690 V by gG fuse rated value	6 kA
<b>let-through current with closed switch</b>	
• at 240 V for combination switch + gG fuse maximum	5 kA
• at 440 V for combination switch + gG fuse maximum	5 kA
• at 690 V for combination switch + gG fuse maximum permissible	5 kA
<b>I<sup>2</sup>t value with closed switch</b>	
• at 240 V for combination switch + gG fuse maximum	15 kA <sup>2</sup> .s
• at 440 V for combination switch + gG fuse maximum	15 kA <sup>2</sup> .s
• at 690 V for combination switch + gG fuse maximum	15 kA <sup>2</sup> .s
<b>design of the fuse link</b>	
• for short-circuit protection of the main circuit required	fuse gL/gG: 40 A
• for short-circuit protection of the auxiliary switch required	fuse gL/gG: 10 A
<b>operational current of upstream fuse rated value</b>	40 A

#### according UL

<b>operational current at AC according to UL 508/UL 60947-4-1 rated value</b>	40 A
<b>operating voltage at AC at 50/60 Hz according to UL 508/UL 60947-4-1 rated value</b>	600 V
<b>active power [hp] at AC at 480 V according to UL 508/UL 60947-4-1 rated value</b>	20
<b>active power [hp] at AC at 600 V according to UL 508/UL 60947-4-1 rated value</b>	20
<b>short-time withstand current (SCCR) at 600 V according to UL 508/UL 60947-4-1</b>	5 kA
<b>continuous current of upstream fuse according to UL rated value</b>	50 A
<b>type of fuse according to UL</b>	RK5

## Connections

<b>AWG number as coded connectable conductor cross section solid maximum</b>	
<ul style="list-style-type: none"> <li>•</li> <li>•</li> </ul>	6 14
<b>type of connectable conductor cross-sections for copper conductor</b>	
<ul style="list-style-type: none"> <li>• solid</li> <li>• finely stranded with core end processing</li> <li>• stranded</li> </ul>	1x (2.5 to 16 mm <sup>2</sup> ) 1x (2.5...16 mm <sup>2</sup> ) 1x (2.5 to 16 mm <sup>2</sup> )
<b>type of connectable conductor cross-sections for auxiliary contacts</b>	
<ul style="list-style-type: none"> <li>• solid</li> <li>• finely stranded with core end processing</li> <li>• stranded</li> </ul>	2x (0.75 ... 2.5 mm <sup>2</sup> ), 1x 4 mm <sup>2</sup> 2x (0.75 ... 1.5 mm <sup>2</sup> ), 1x 2.5 mm <sup>2</sup> 2x (0.75 ... 2.5 mm <sup>2</sup> ), 1x 4 mm <sup>2</sup>
<b>type of electrical connection</b>	
<ul style="list-style-type: none"> <li>• for main current circuit</li> <li>• for auxiliary contacts</li> </ul>	box terminal Box terminals

## Mechanical Design

<b>height</b>	60 mm
<b>width</b>	36 mm
<b>depth</b>	64 mm
<b>type of device</b>	fixed mounting
<b>fastening method</b>	Built-in unit fixed-mounted version
<b>fastening method</b>	
<ul style="list-style-type: none"> <li>• 4-hole front mounting</li> <li>• front mounting with central attachment</li> <li>• rail mounting</li> </ul>	No No Yes
<b>Net Weight</b>	149 g

## Environmental conditions

<b>ambient temperature during operation</b>	
<ul style="list-style-type: none"> <li>• minimum</li> <li>• maximum</li> </ul>	-25 °C 55 °C
<b>ambient temperature during storage</b>	
<ul style="list-style-type: none"> <li>• minimum</li> <li>• maximum</li> </ul>	-25 °C 55 °C

## Approvals Certificates

<b>General Product Approval</b>	<b>other</b>
---------------------------------	--------------



CCC



EG-Konf.



UL



[Confirmation](#)

<b>other</b>	<b>Environment</b>
--------------	--------------------



[Environmental Con-  
firmations](#)

[Environmental Con-  
firmations](#)

## Further information

Information on the packaging

<https://support.industry.siemens.com/cs/ww/en/view/109813875>

Information for data generation and storage

<https://support.industry.siemens.com/cs/ww/en/view/109995012>

Information- and Downloadcenter (Catalogs, Brochures,...)

<https://www.siemens.com/lowvoltage/catalogs>

Industry Mall (Online ordering system)

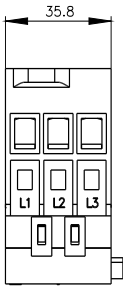
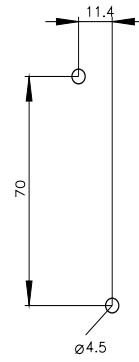
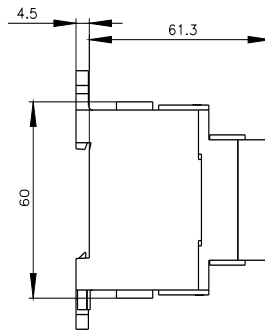
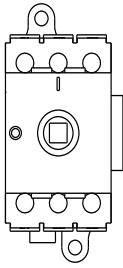
<https://mall.industry.siemens.com/mall/en/en/Catalog/product?mlfb=3LD3310-0TK05>

Service&Support (Manuals, Certificates, Characteristics, FAQs,...)

<https://support.industry.siemens.com/cs/ww/en/ps/3LD3310-0TK05>

Image database (product images, 2D dimension drawings, 3D models, device circuit diagrams, ...)

[https://www.automation.siemens.com/bilddb/cax\\_en.aspx?mlfb=3LD3310-0TK05](https://www.automation.siemens.com/bilddb/cax_en.aspx?mlfb=3LD3310-0TK05)



last modified:

10/14/2025 

