



SENTRON, Switch disconnecter 3LD, main switch, 3-pole, Iu: 16 A, Operating power / at AC-23 A at 400 V: 7.5 kW, front-mounted, knob-operated mechanism, black, 4-hole mounting of the handle

| Model | |
|---|--------------------------------|
| product brand name | SENTRON |
| product designation | Switch disconnecter |
| design of the product | Main switch |
| display version for switch position indicator manual operation | 1 ON - 0 OFF |
| type of switch | front mounted |
| design of the actuating element | selector switch |
| color of the actuating element | black |
| design of handle | knob-operated mechanism, black |
| type of the driving mechanism motor drive | No |
| General technical data | |
| number of poles | 3 |
| size of switch disconnecter | 1 |
| mechanical service life (operating cycles) typical | 100 000 |
| electrical endurance (operating cycles) | |
| • at AC-23 A at 690 V | 6 000 |
| operating frequency maximum | 50 1/h |
| degree of pollution | 3 |
| Voltage | |
| insulation voltage rated value | 690 V |
| surge voltage resistance rated value | 6 kV |
| operating voltage | |
| • at AC rated value | 690 V |
| operating frequency rated value | |
| • minimum | 50 Hz |
| • maximum | 60 Hz |
| Protection class | |
| protection class IP | IP65 |
| degree of protection NEMA rating | 1, 3R, 4X, 12 |
| protection class IP on the front | IP65 |
| Dissipation | |
| power loss [W] for rated value of the current at AC in hot operating state per pole | 0.5 W |
| Main circuit | |
| operational current | |
| • at AC-21 at 690 V rated value | 16 A |
| • at AC-21 A at 240 V rated value | 16 A |
| • at AC-21 A at 400 V rated value | 16 A |
| • at AC-21 A at 440 V rated value | 16 A |

| | |
|--|--|
| <ul style="list-style-type: none"> at AC-23 A at 400 V rated value | 16 A |
| operating power | |
| <ul style="list-style-type: none"> at AC-23 A at 240 V rated value at AC-23 A at 400 V rated value at AC-23 A at 440 V rated value at AC-23 A at 690 V rated value at AC-3 at 240 V rated value at AC-3 at 400 V rated value at AC-3 at 690 V rated value | 4 kW 8 kW 7.5 kW 8 kW 3 kW 6 kW 5.5 kW |
| Auxiliary circuit | |
| number of CO contacts for auxiliary contacts | 0 |
| number of NC contacts for auxiliary contacts | 0 |
| number of NO contacts for auxiliary contacts | 0 |
| operating voltage of auxiliary contacts at AC maximum | 500 V |
| continuous current of the auxiliary contact rated value | 10 A |
| insulation voltage of the auxiliary switch rated value | 500 V |
| Suitability | |
| suitability for use main switch | Yes |
| suitability for use switch disconnecter | Yes |
| suitability for use EMERGENCY OFF switch | No |
| suitability for use safety switch | Yes |
| suitability for use maintenance/repair switch | Yes |
| Product details | |
| product feature can be locked into OFF position | Yes |
| Accessories | |
| product extension optional | |
| <ul style="list-style-type: none"> motor drive voltage trigger | No No |
| number of connectable NC contacts for auxiliary contacts attachable maximum | 3 |
| number of connectable NO contacts for auxiliary contacts attachable maximum | 3 |
| number of connectable CO contacts for auxiliary contacts attachable maximum | 0 |
| number of bracket locks maximum | 2 |
| hasp thickness of the bracket locks | 4 ... 6 mm |
| Short circuit | |
| conditional short-circuit current with line-side fuse protection | |
| <ul style="list-style-type: none"> at 690 V by gG fuse rated value | 50 kA |
| let-through current with closed switch | |
| <ul style="list-style-type: none"> at 240 V for combination switch + gG fuse maximum at 440 V for combination switch + gG fuse maximum at 690 V for combination switch + gG fuse maximum permissible | 3 kA 3 kA 3 kA |
| I²t value with closed switch | |
| <ul style="list-style-type: none"> at 240 V for combination switch + gG fuse maximum at 440 V for combination switch + gG fuse maximum at 690 V for combination switch + gG fuse maximum | 2.5 kA ² .s 2.5 kA ² .s 3 kA ² .s |
| design of the fuse link | |
| <ul style="list-style-type: none"> for short-circuit protection of the main circuit required for short-circuit protection of the auxiliary switch required | fuse gL/gG: 20 A fuse gL/gG: 10 A |
| operational current of upstream fuse rated value | 20 A |
| according UL | |
| operational current at AC according to UL 508/UL 60947-4-1 rated value | 16 A |
| operating voltage at AC at 50/60 Hz according to UL 508/UL 60947-4-1 rated value | 600 V |
| active power [hp] at AC at 480 V according to UL 508/UL 60947-4-1 rated value | 7.5 |
| active power [hp] at AC at 600 V according to UL 508/UL 60947-4-1 rated value | 10 |
| short-time withstand current (SCCR) at 600 V according to | 5 kA |

| | |
|--|------|
| UL 508/UL 60947-4-1 | |
| continuous current of upstream fuse according to UL rated value | 50 A |
| type of fuse according to UL | RK5 |

Connections

| | |
|--|--|
| AWG number as coded connectable conductor cross section solid maximum | |
| • | 10 |
| • | 18 |
| type of connectable conductor cross-sections for copper conductor | |
| • solid | 1x (1...6mm ²) |
| • finely stranded with core end processing | 1x (1...4mm ²) |
| • stranded | 1x (1..6mm ²) |
| type of connectable conductor cross-sections for auxiliary contacts | |
| • solid | lateral auxiliary switch 2x (0,75 ... 2,5mm ²), 1x 4mm ² ; front auxiliary switch 1x (0,75 ... 2,5mm ²) |
| • finely stranded with core end processing | lateral auxiliary switch 2x (0,75 ... 1,5mm ²), 1x 2,5mm ² ; front auxiliary switch 1x 2,5mm ² |
| • stranded | lateral auxiliary switch 2x (0,75 ... 2,5mm ²), 1x 4mm ² ; front auxiliary switch 1x (0,75 ... 2,5mm ²) |
| type of electrical connection | |
| • for main current circuit | box terminal |
| • for auxiliary contacts | connection terminals |

Mechanical Design

| | |
|--|-------------------------------------|
| height | 66 mm |
| width | 49 mm |
| depth | 90 mm |
| type of device | fixed mounting |
| fastening method | Built-in unit fixed-mounted version |
| fastening method | |
| • 4-hole front mounting | Yes |
| • front mounting with central attachment | No |
| • rail mounting | No |
| Net Weight | 181 g |

Environmental conditions

| | |
|---|--------|
| ambient temperature during operation | |
| • minimum | -25 °C |
| • maximum | 55 °C |
| ambient temperature during storage | |
| • minimum | -25 °C |
| • maximum | 55 °C |

Approvals Certificates

General Product Approval



[Miscellaneous](#)

| | | | |
|--------------------------|----------------------|-------|-------------|
| General Product Approval | Maritime application | other | Environment |
|--------------------------|----------------------|-------|-------------|



[Confirmation](#)

[Environmental Confirmations](#)

Environment

[Environmental Con-](#)

Further information

Information on the packaging

<https://support.industry.siemens.com/cs/ww/en/view/109813875>

Information for data generation and storage

<https://support.industry.siemens.com/cs/ww/en/view/109995012>

Information- and Downloadcenter (Catalogs, Brochures,...)

<https://www.siemens.com/lowvoltage/catalogs>

Industry Mall (Online ordering system)

<https://mall.industry.siemens.com/mall/en/en/Catalog/product?mlfb=3LD2022-0TK11>

Service&Support (Manuals, Certificates, Characteristics, FAQs,...)

<https://support.industry.siemens.com/cs/ww/en/ps/3LD2022-0TK11>

Image database (product images, 2D dimension drawings, 3D models, device circuit diagrams, ...)

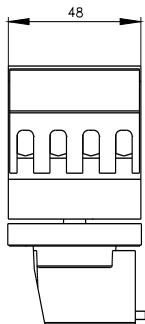
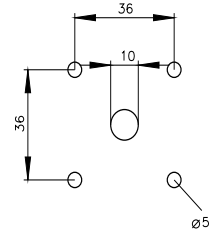
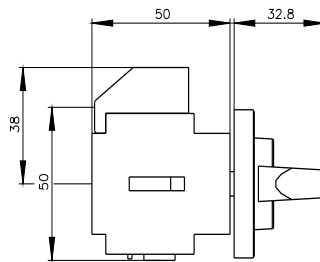
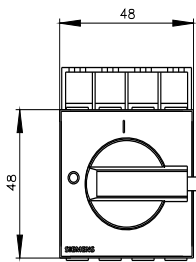
https://www.automation.siemens.com/bilddb/cax_en.aspx?mlfb=3LD2022-0TK11

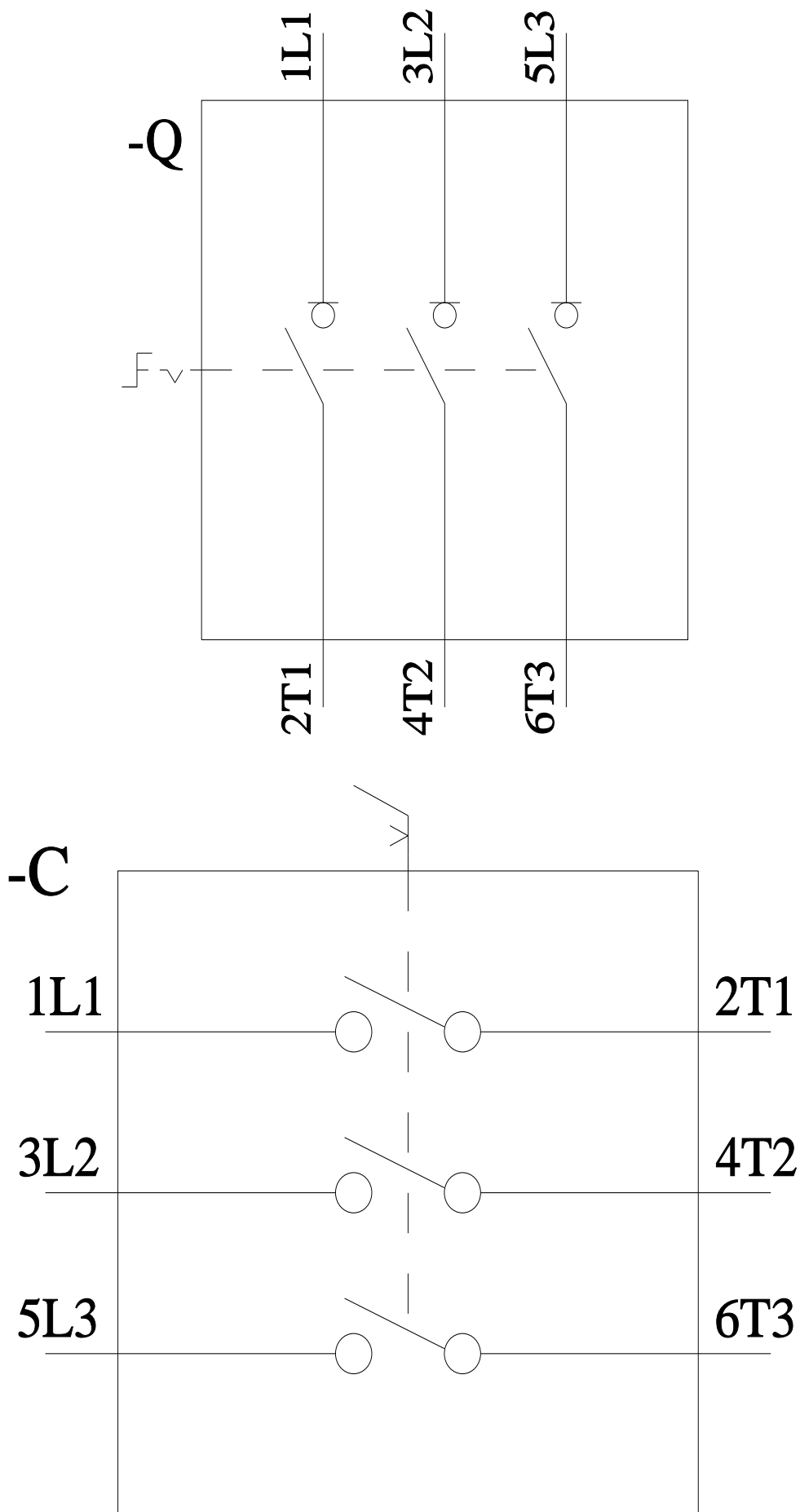
CAX-Online-Generator

<https://www.siemens.com/cax>

Tender specifications

<https://www.siemens.com/specifications>





last modified:

10/14/2025 

