



Switch disconnecter 125A, size 02, 3-pole Front operating mechanism center Basic unit without handle Box terminal

Model	
product brand name	SENTRON
product designation	3KD switch disconnecter
design of the product	Switch
display version for switch position indicator door-coupling rotary operating mechanism	ON-OFF
design of the actuating element	Without handle
type of the driving mechanism	Front operating mechanism
type of the driving mechanism motor drive	No
General technical data	
number of poles	3
type of device	fixed mounting
size of switch disconnecter	02
mechanical service life (operating cycles) typical	100 000
electrical endurance (operating cycles)	
• at AC-23 A at 690 V	6 000
I <sup>2</sup> t value	
• of the fuse at 400 V maximum permissible	130 000 A <sup>2</sup> ·s
• of the fuse at 500 V maximum permissible	130 000 A <sup>2</sup> ·s
• of the gG fuse at 690 V maximum permissible	130 000 A <sup>2</sup> ·s
position of the switch operating mechanism	central
overvoltage in percent relative to the operating voltage at AC at 400, 500, 690 V at 50/60 Hz	5 %
overvoltage category	III
degree of pollution	3
Voltage	
insulation voltage	
• rated value	750 V
surge voltage resistance rated value	8 kV
let-through current of the fuse at 400 V maximum permissible	10 500 A
let-through current of the fuse at 500 V maximum permissible	7 000 A
let-through current of the gG fuse at 690 V maximum permissible	7 000 A
Supply voltage	
operating voltage at AC rated value	690 V
Protection class	
protection class IP	IP10
protection class IP	
• with closed switch with cover or cable lug cover	IP10

<ul style="list-style-type: none"> <li>• on the front</li> </ul>	IP40
<b>Dissipation</b>	
<b>power loss [W]</b>	
<ul style="list-style-type: none"> <li>• with conventional rated thermal current per pole</li> </ul>	12 W
<ul style="list-style-type: none"> <li>• with conventional rated thermal current per device</li> </ul>	12 W
<ul style="list-style-type: none"> <li>• for rated value of the current at AC in hot operating state per pole</li> </ul>	36 W
<b>Main circuit</b>	
<b>operating power</b>	
<ul style="list-style-type: none"> <li>• at AC-23 A at 500 V rated value</li> </ul>	22 kW
operational current rated value	125 A
<b>Auxiliary circuit</b>	
<b>number of connected NC contacts for auxiliary contacts</b>	0
<b>number of connected NO contacts for auxiliary contacts</b>	0
<b>number of connected CO contacts for auxiliary contacts</b>	0
number of CO contacts for auxiliary contacts	0
<b>number of NC contacts for auxiliary contacts</b>	2
<b>number of NO contacts for auxiliary contacts</b>	2
<b>Suitability</b>	
<b>suitability for use main switch</b>	Yes
<b>suitability for use switch disconnecter</b>	Yes
<b>suitability for use EMERGENCY OFF switch</b>	Yes
<b>suitability for use safety switch</b>	Yes
<b>suitability for use according to IEC 62626-1 safety switch</b>	No
<b>suitability for use maintenance/repair switch</b>	Yes
<b>Product details</b>	
<b>product feature interlock</b>	No
<b>product component</b>	
<ul style="list-style-type: none"> <li>• trip indicator</li> </ul>	No
<ul style="list-style-type: none"> <li>• voltage trigger</li> </ul>	No
<ul style="list-style-type: none"> <li>• undervoltage release</li> </ul>	No
<ul style="list-style-type: none"> <li>• undervoltage release with leading contact</li> </ul>	No
<b>product extension auxiliary switch</b>	Yes
<b>product extension optional motor drive</b>	No
<b>product extension optional voltage trigger</b>	No
<b>Short circuit</b>	
<b>short-circuit current making capacity (I<sub>cm</sub>) for switch disconnecter</b>	
<ul style="list-style-type: none"> <li>• without fuse link rated value minimum</li> </ul>	3.5 kA
<b>conditional short-circuit current (I<sub>cc</sub>) with line-side fuse protection at 400 V by gG fuse rated value</b>	50 kA
<b>conditional short-circuit current with line-side fuse protection</b>	
<ul style="list-style-type: none"> <li>• at 500 V by gG fuse rated value</li> </ul>	20 kA
<ul style="list-style-type: none"> <li>• at 690 V by gG fuse rated value</li> </ul>	20 kA
<b>Connections</b>	
<b>type of connectable conductor cross-sections for copper conductor</b>	
<ul style="list-style-type: none"> <li>• solid</li> </ul>	1 x (4 ... 50) mm <sup>2</sup>
<ul style="list-style-type: none"> <li>• finely stranded with core end processing</li> </ul>	1 x (4 ... 35) mm <sup>2</sup>
<ul style="list-style-type: none"> <li>• stranded</li> </ul>	1 x (4 ... 50) mm <sup>2</sup>
type of electrical connection for main current circuit	box terminal
<b>Mechanical Design</b>	
<b>height</b>	110 mm
<b>width</b>	73 mm
<b>depth</b>	74 mm
<b>fastening method</b>	Screw fixing and standard rail mounting 35 mm
<b>fastening method</b>	
<ul style="list-style-type: none"> <li>• 4-hole front mounting</li> </ul>	No
<ul style="list-style-type: none"> <li>• front mounting with central attachment</li> </ul>	No
<ul style="list-style-type: none"> <li>• rail mounting</li> </ul>	Yes
<b>mounting position</b>	any

<b>Net Weight</b>	432 g
<b>Environmental conditions</b>	
<b>ambient temperature during operation</b>	
• minimum	-5 °C
• maximum	40 °C
<b>ambient temperature during storage</b>	
• minimum	-25 °C
• maximum	55 °C
<b>Certificates</b>	
<b>reference code according to IEC 81346-2</b>	Q
<b>Approvals Certificates</b>	
<b>General Product Approval</b>	<b>other</b>



[Miscellaneous](#)



<b>other</b>	<b>Environment</b>
--------------	--------------------

[Miscellaneous](#)

[Confirmation](#)

[Environmental Confirmations](#)

**Further information**

**Information on the packaging**

<https://support.industry.siemens.com/cs/ww/en/view/109813875>

**Information for data generation and storage**

<https://support.industry.siemens.com/cs/ww/en/view/109995012>

**Information- and Downloadcenter (Catalogs, Brochures,...)**

<http://www.siemens.com/lowvoltage/catalogs>

**Industry Mall (Online ordering system)**

<https://mall.industry.siemens.com/mall/en/en/Catalog/product?mlfb=3KD0630-2LG20-3>

**Service&Support (Manuals, Certificates, Characteristics, FAQs,...)**

<https://support.industry.siemens.com/cs/ww/en/ps/3KD0630-2LG20-3>

**Image database (product images, 2D dimension drawings, 3D models, device circuit diagrams, ...)**

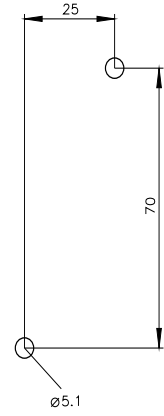
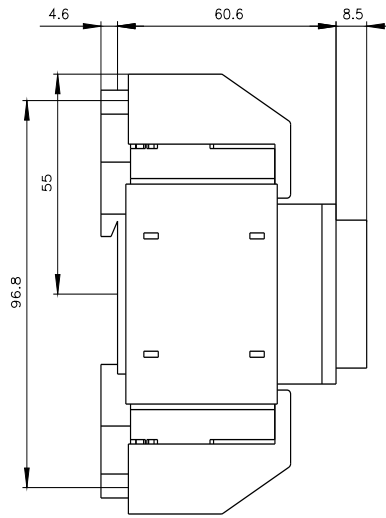
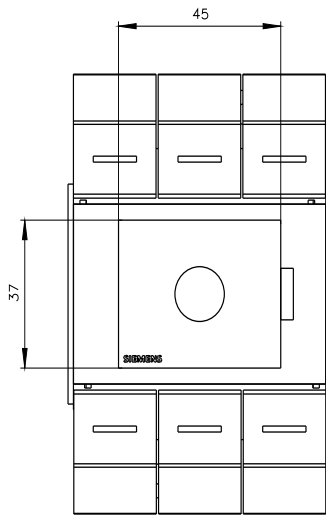
[http://www.automation.siemens.com/bilddb/cax\\_en.aspx?mlfb=3KD0630-2LG20-3](http://www.automation.siemens.com/bilddb/cax_en.aspx?mlfb=3KD0630-2LG20-3)

**CAX-Online-Generator**

<http://www.siemens.com/cax>

**Tender specifications**

<http://www.siemens.com/specifications>



last modified:

7/9/2025 

